

## LEGEND

- Glue
- \* Cutout - make a hole



Model : No. 0368/VI/14



# Rosetta's Philae Lander

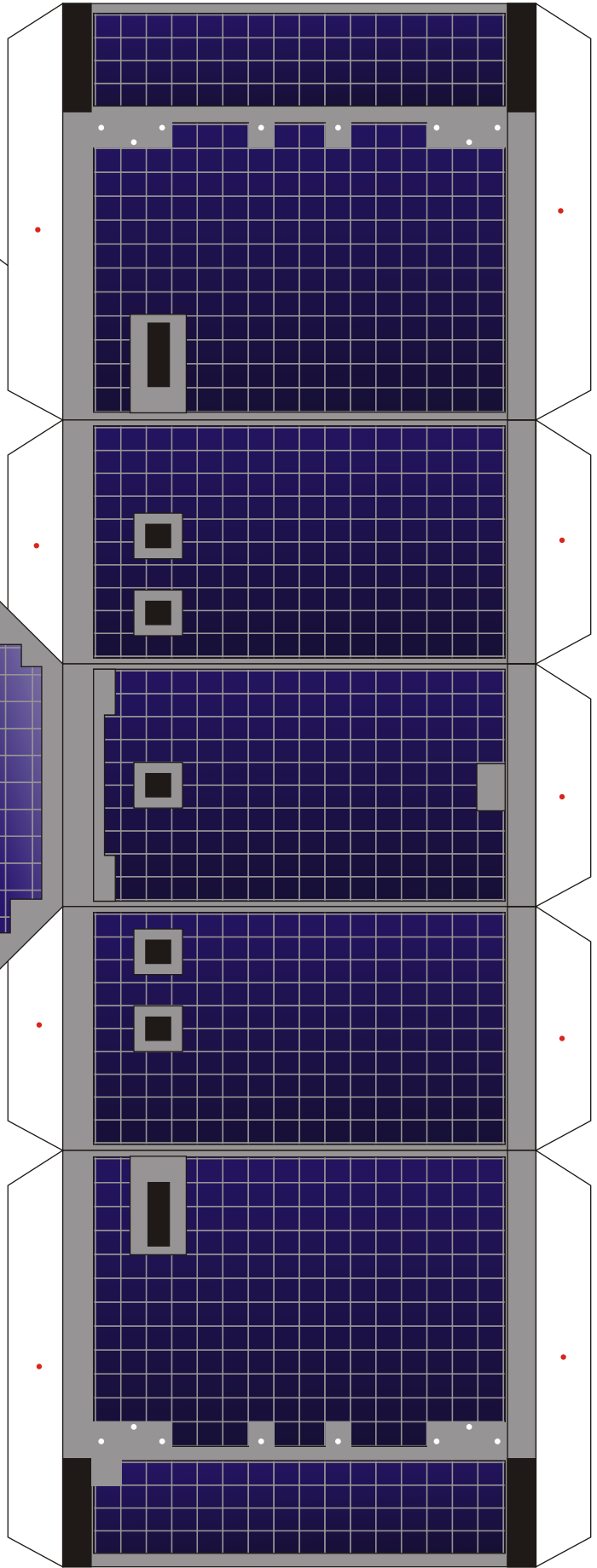
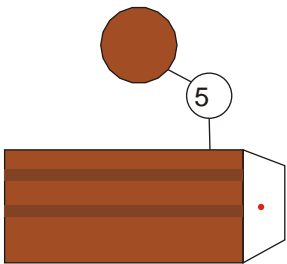
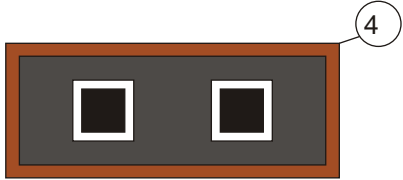
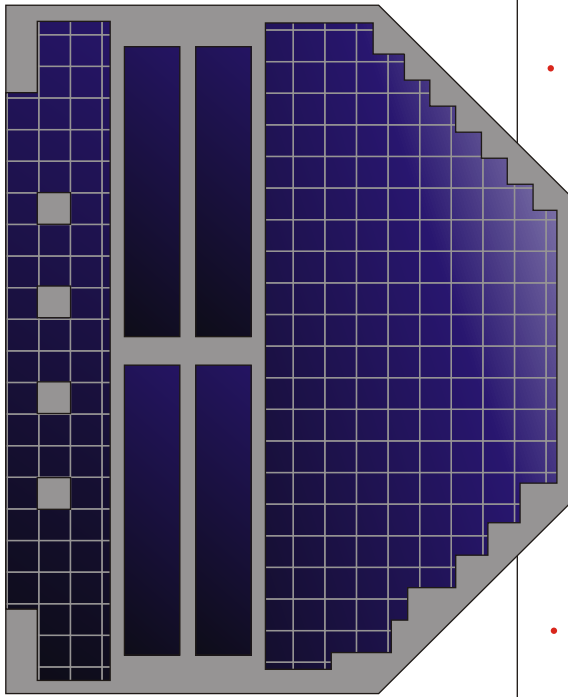
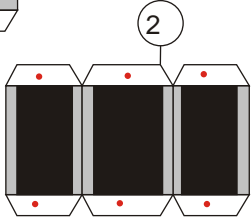
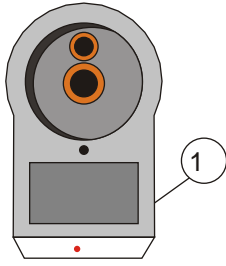
Scale ~ 1:10

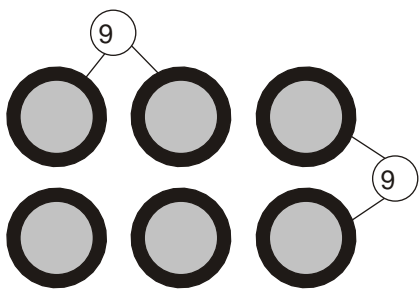
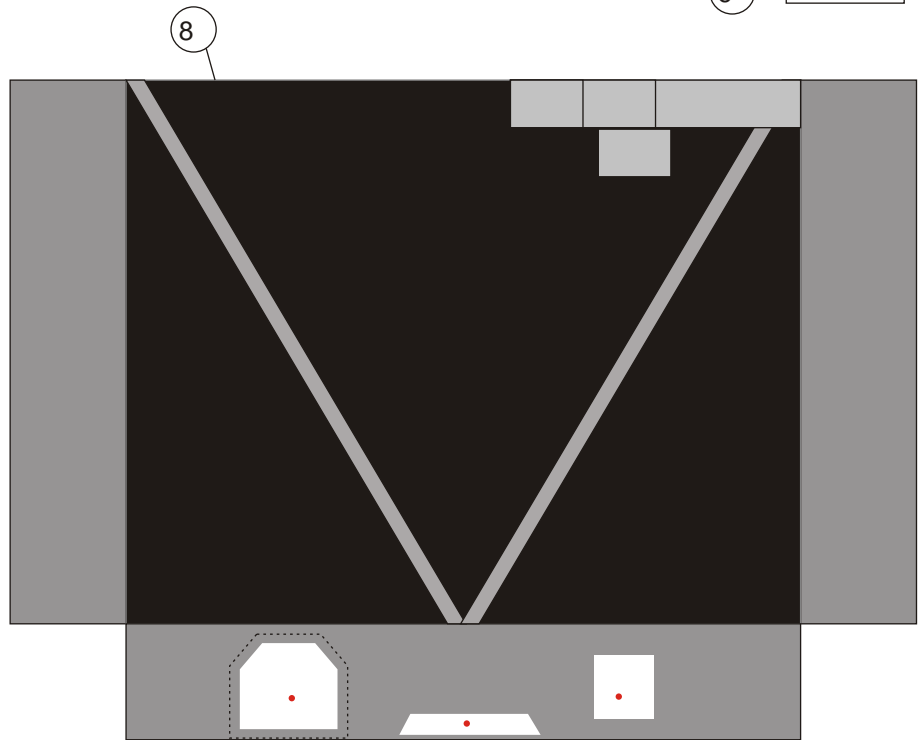
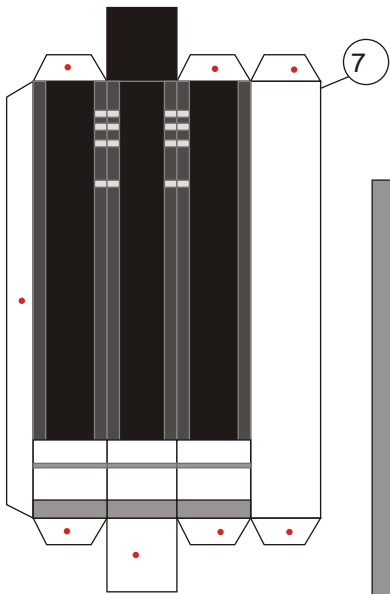
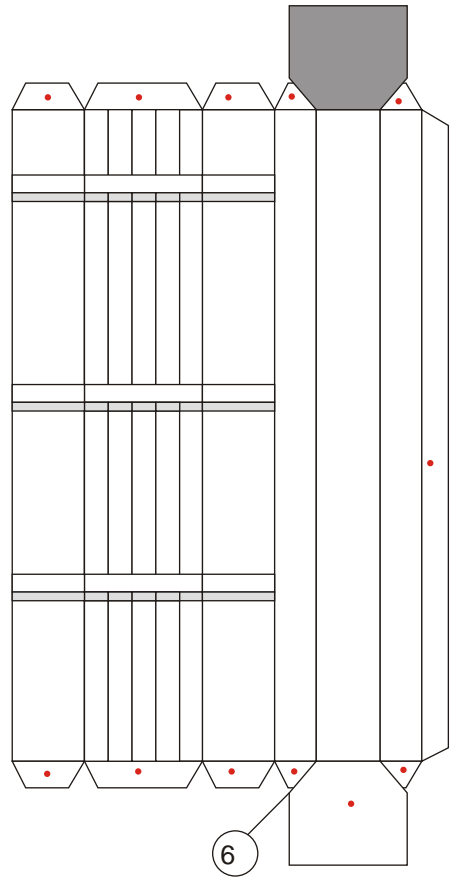
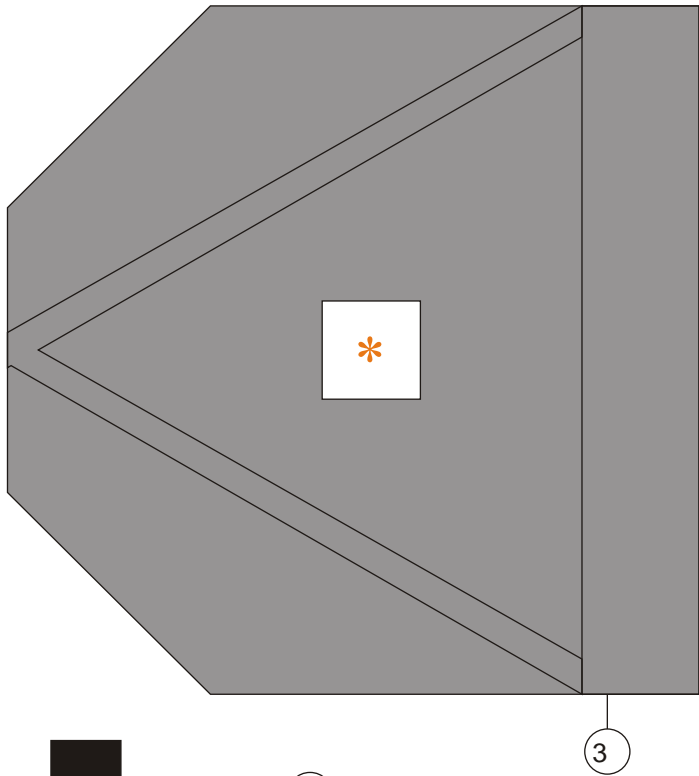
I feel excited when I read that scientists from European and US managed to land a lander on the surface of a comet that was currently wandering the space in 135,000 km/h speed. The is named comet 67P. It took 10 years (2004-2014) to intercept this comet before the mothership Rosetta finally managed to release the Philae lander to the comet's surface. Mothership Rosetta continues to orbit the comet until now. Reportedly Philae before entering hibernation mode, its sensor could detect the presence of organism molecules and took some pictures. Currently Philae is not in operation. They said we have to be patient until August 2015 when the surface which comet lander sits is facing the sun, so that its solar panels can provide the power back and continue to explore the comet surface.

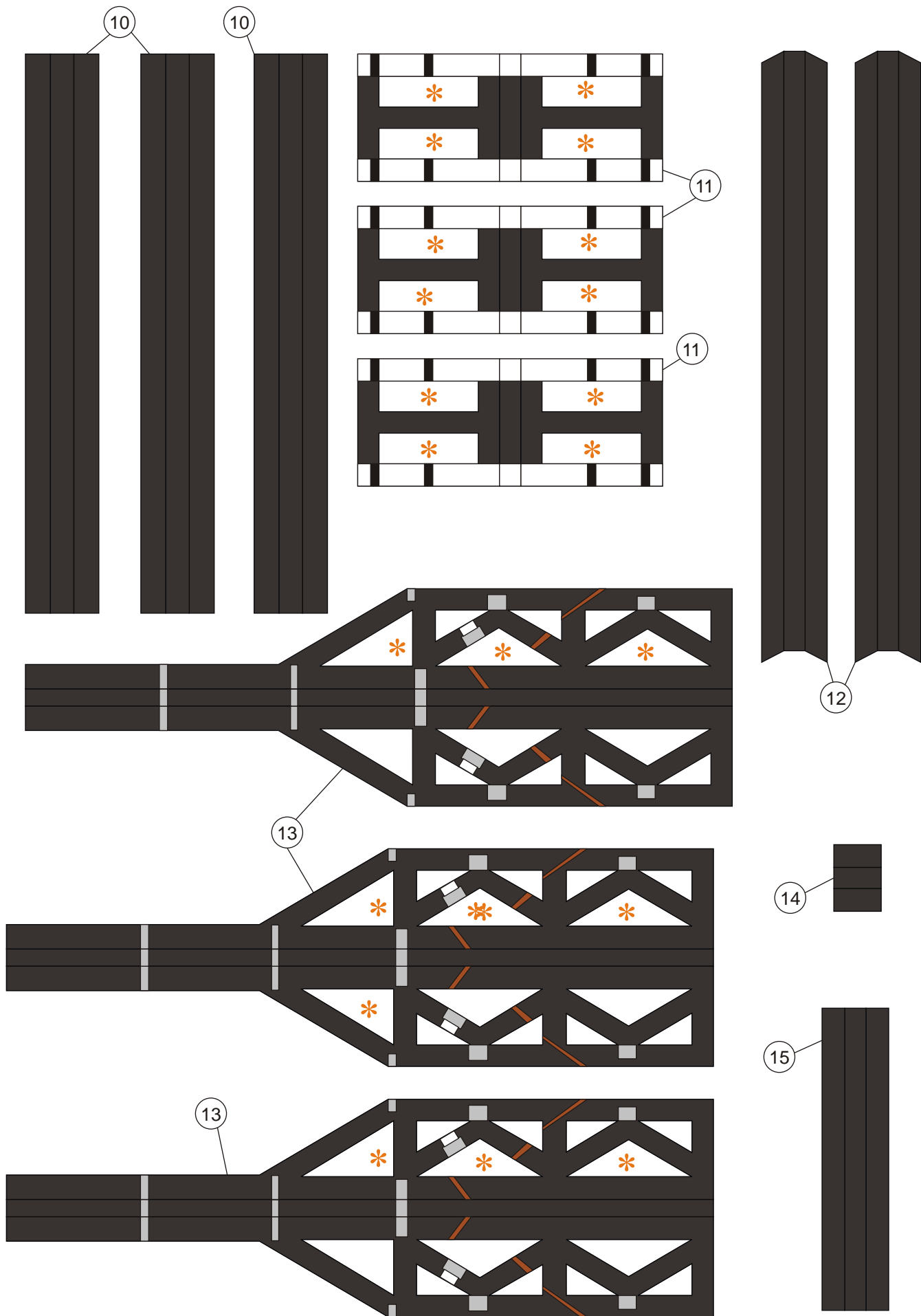
**Assembly Instructions - [click here](#)**

Petunjuk Perakitan

paper model by Julius Perdana - 2014







# Make these part with 3 mm thick cardboard

