

## LEGEND

- Glue
- \* Cutout - make a hole



Model : No. 0371/VI/14



# Interstellar Ranger Spacecraft

Scale 1:200

Actually this scale model was not in my plans. I stumbled upon its picture when I browse for Philae lander spacecraft pictures. I think this would be a good model if I make a paper model template. According to the data that I read in a website, this ranger spacecraft is 54 meters long. I made a model with 27 cm long, so the scale is about 1:200. This spacecraft is appear on the latest science fiction movie Interstellar. It can accommodate 4 crews plus 1 robot. The director of the movie, Christopher Nolan demanded the use of 3d printed miniature models of this ship rather than CG model in his movie. He also use real scene and environment and 1:1 spacecraft model. This movie was praised among scientists and science fiction fans around the world.

## DISCLAIMER

Paper-replika is not endorsed by anyone to make this papercraft  
Paper-replika is a personal unofficial fan & hobby site.  
This papercraft is a fan made model.

**DO NOT USE FOR ANY COMMERCIAL PURPOSES, PLEASE USE FOR PERSONAL USE ONLY.**

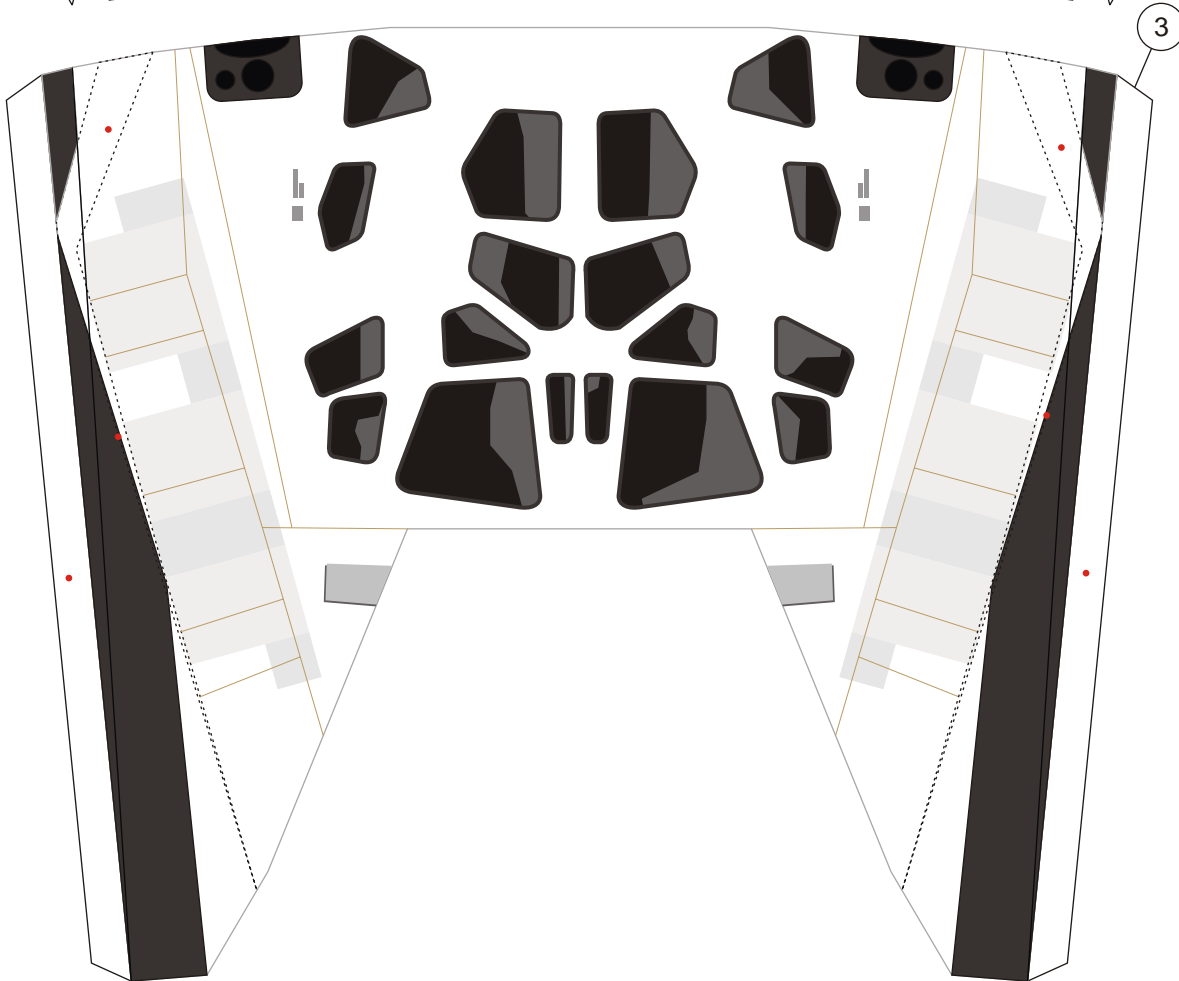
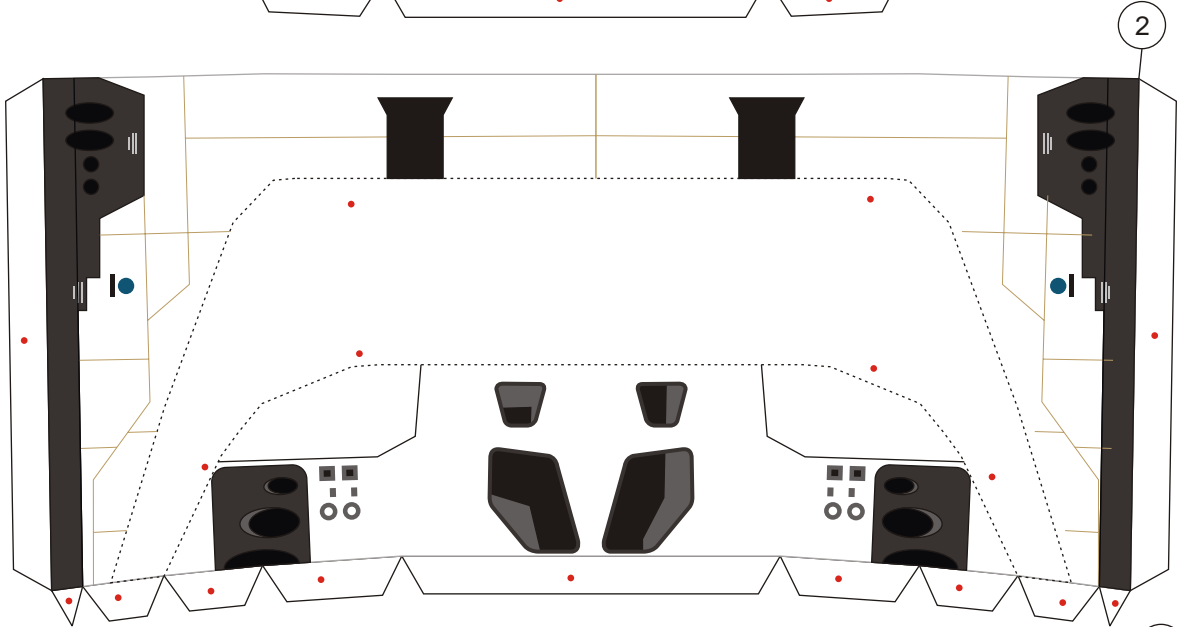
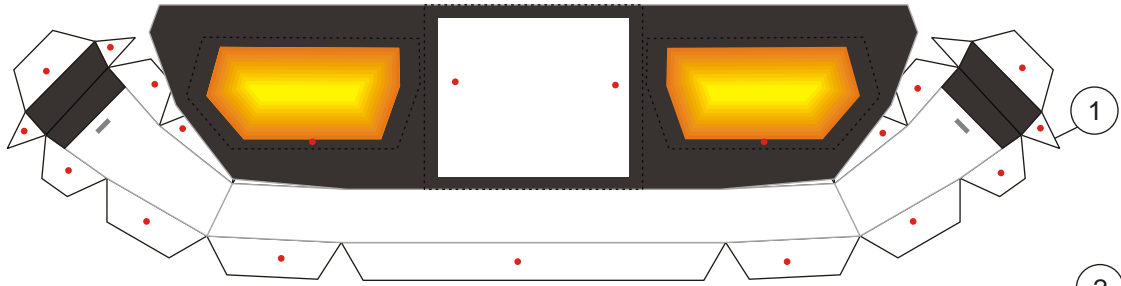
All trademarks mentioned belong to its respective

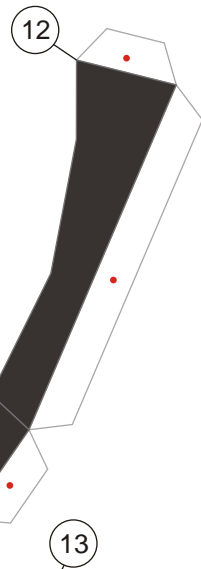
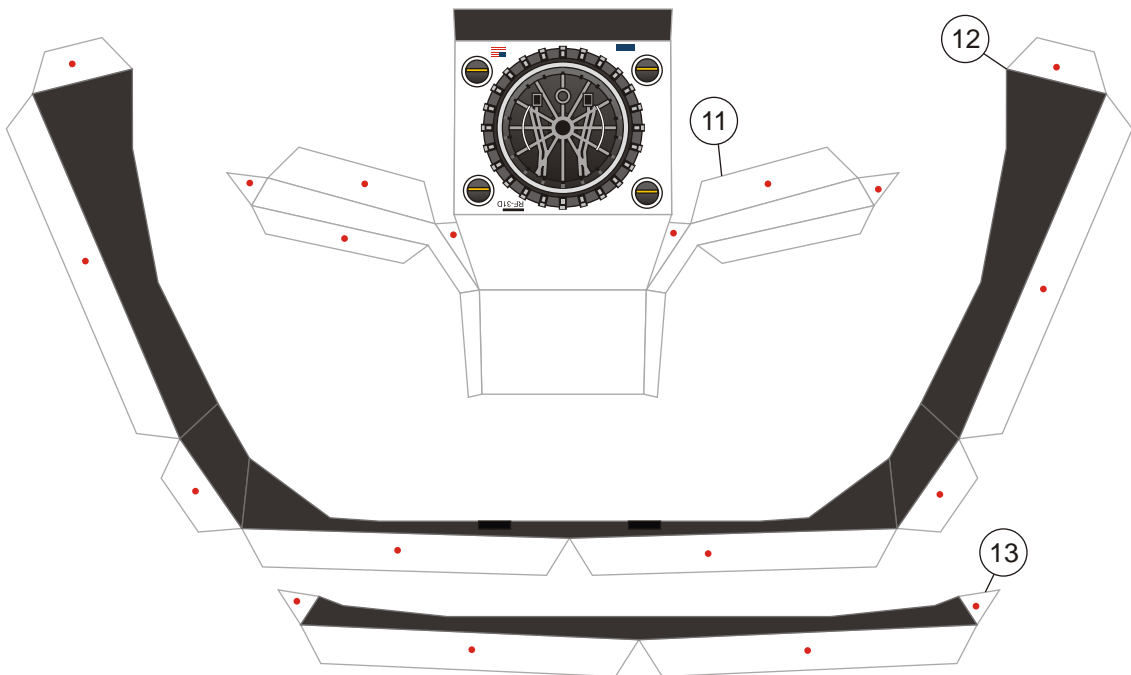
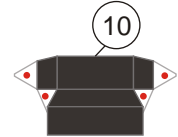
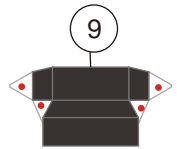
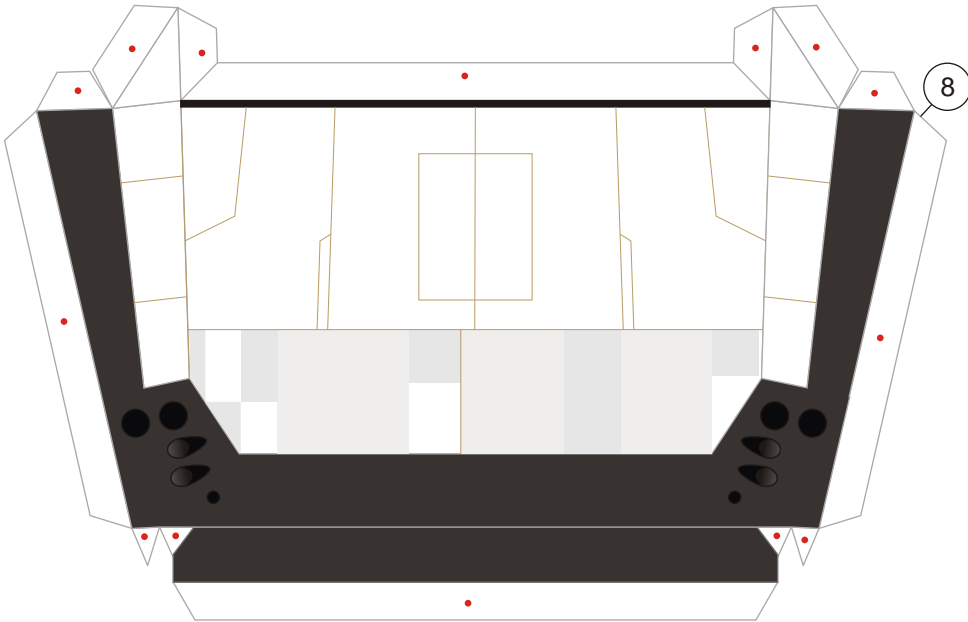
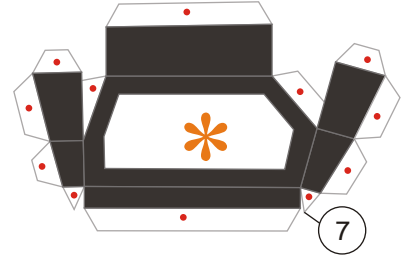
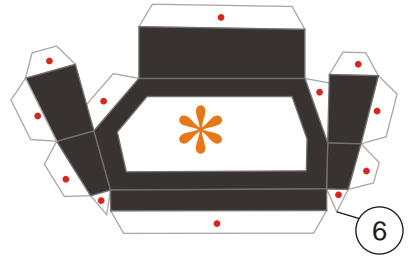
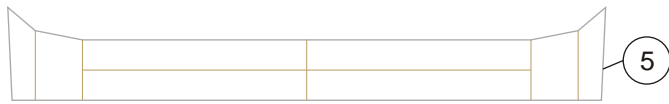
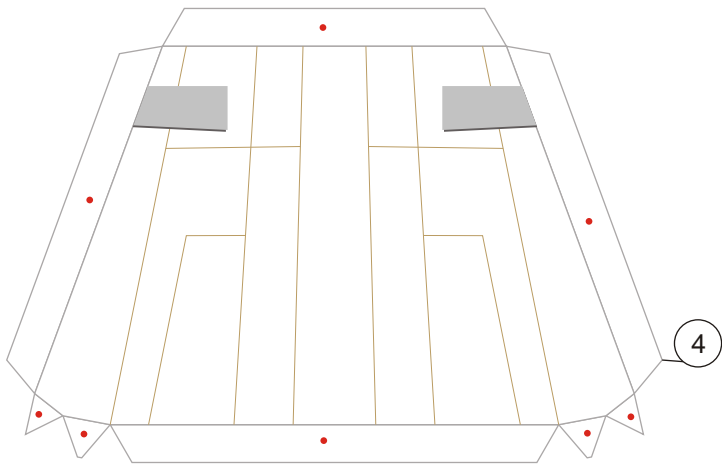
Visit : [www.interstellar-movie.com](http://www.interstellar-movie.com)

**Assembly Instructions - click here**

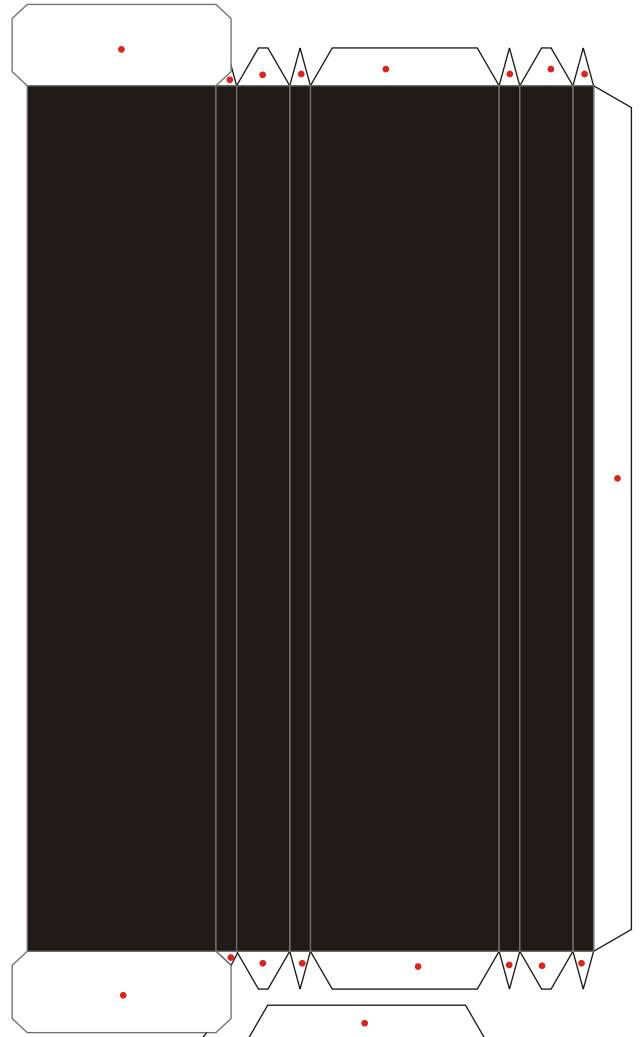
Petunjuk Perakitan

Paper model by Julius Perdana - 2014





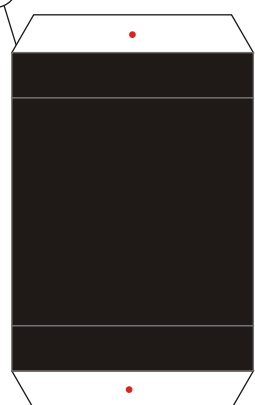
13

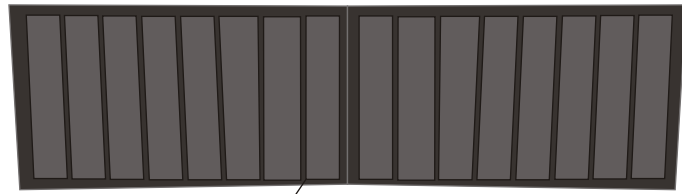


15

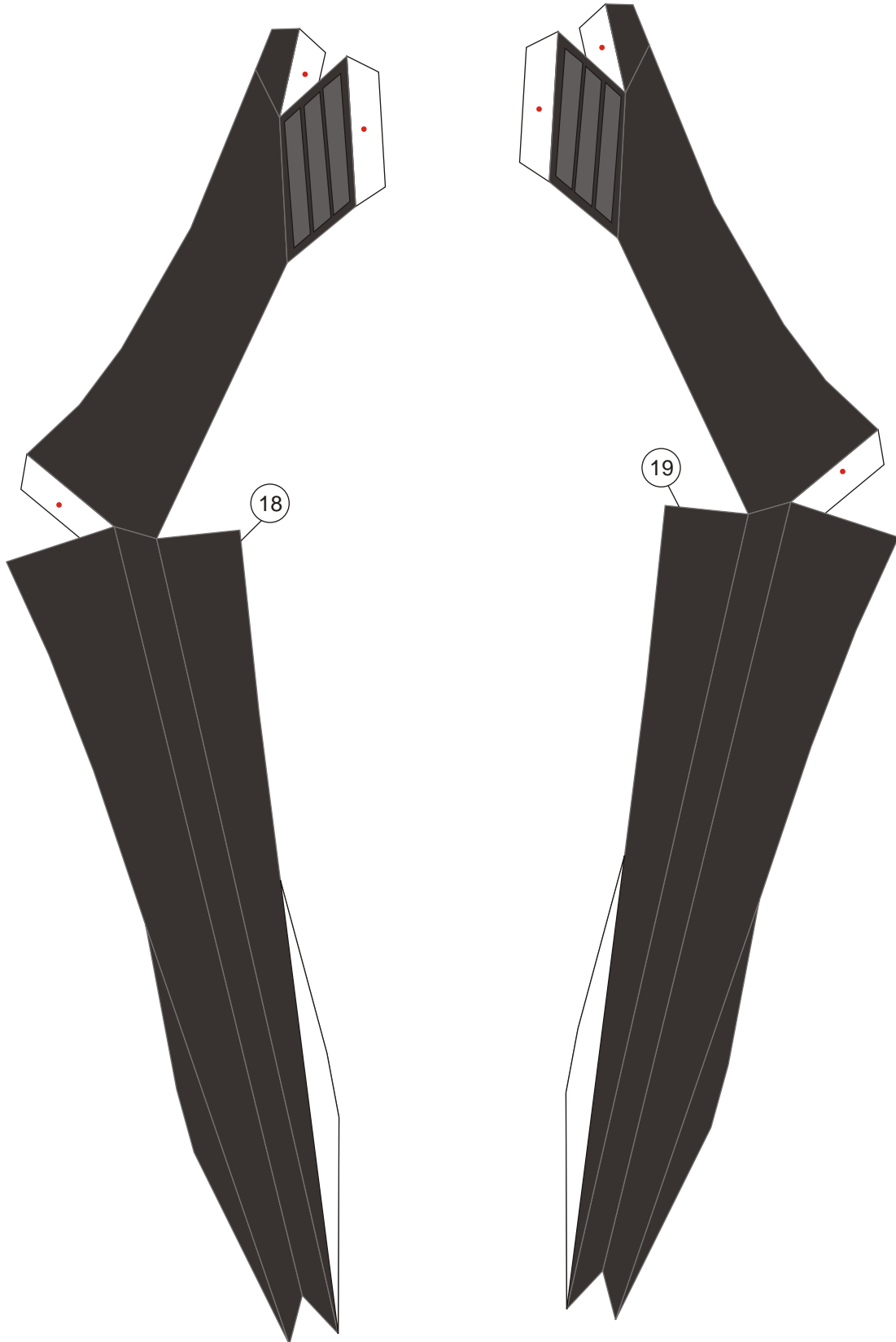
14

16



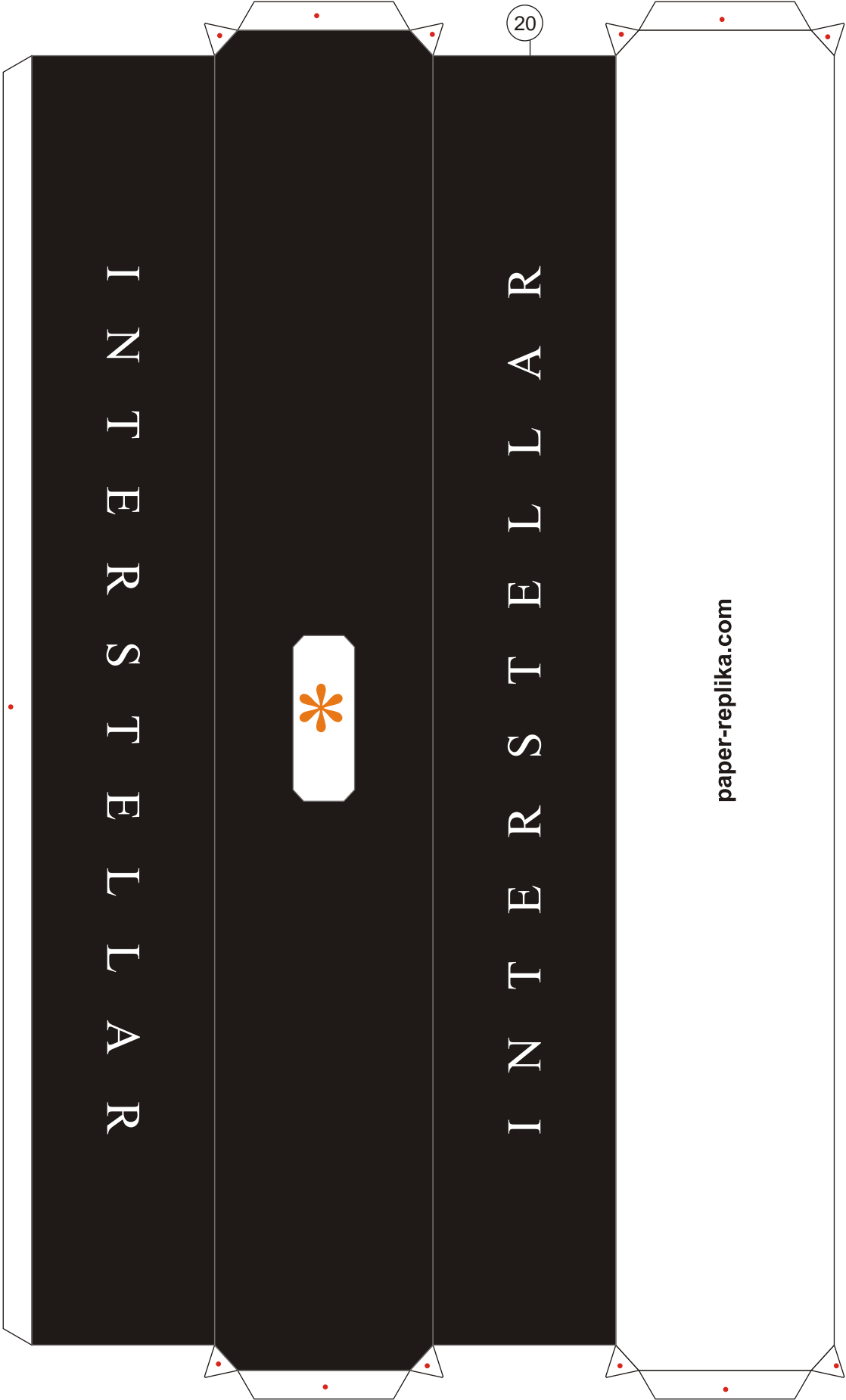


17



18

19



I N T E R S T E L L A R



I N T E R S T E L L A R

20

paper-replika.com