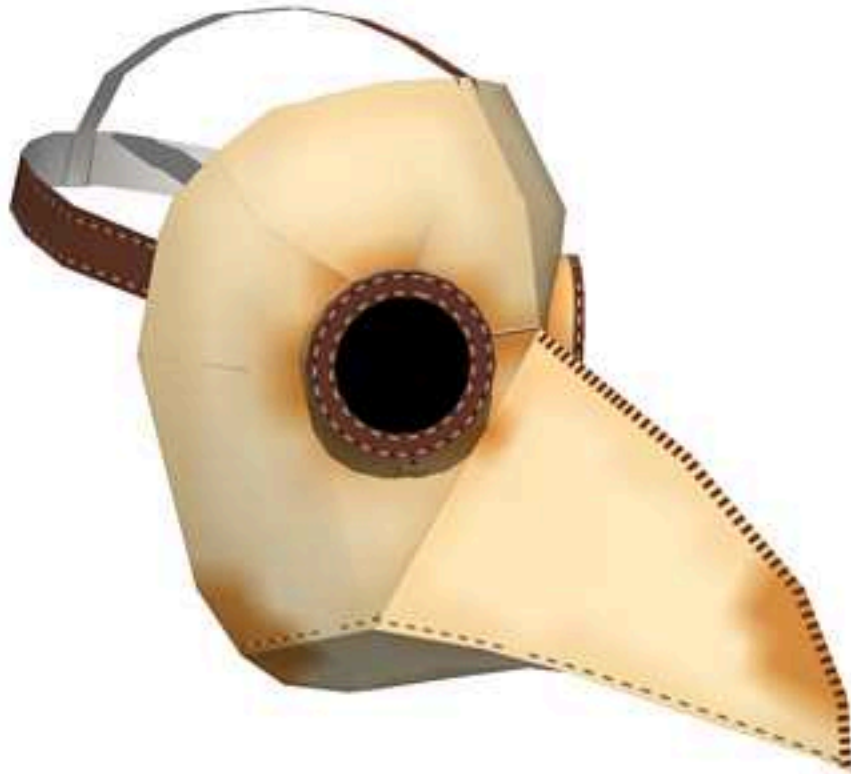


LEGEND	
●	Glue
✳	Cutout - make a hole



Model : No. 0367/VI/14



# Plague Doctor Mask

1:1 wearable mask

The first time I post the photo of this mask template design process, my friend thought I made a mask of one of the characters in the game Assassin's Creed. Actually I inspired by the Ebola outbreak that happened in some countries around the world. At the time of the bubonic plague known as the Black Death in the 14th century, doctor who care for patients wearing a special mask that like a bird head. They do not know about Hazmat suit yet and didn't have any knowledge of bacteria, let alone viruses. The doctor fills the inner beak part of the mask with sweet scent of flowers so they do not smell the stench of disease they are handled. Halloween is also soon to arrive, this mask is also suitable to be used as part of a costume. This papercraft template is 1:1 scale and it wearable. I also share the PDO file, so you can edit its size.

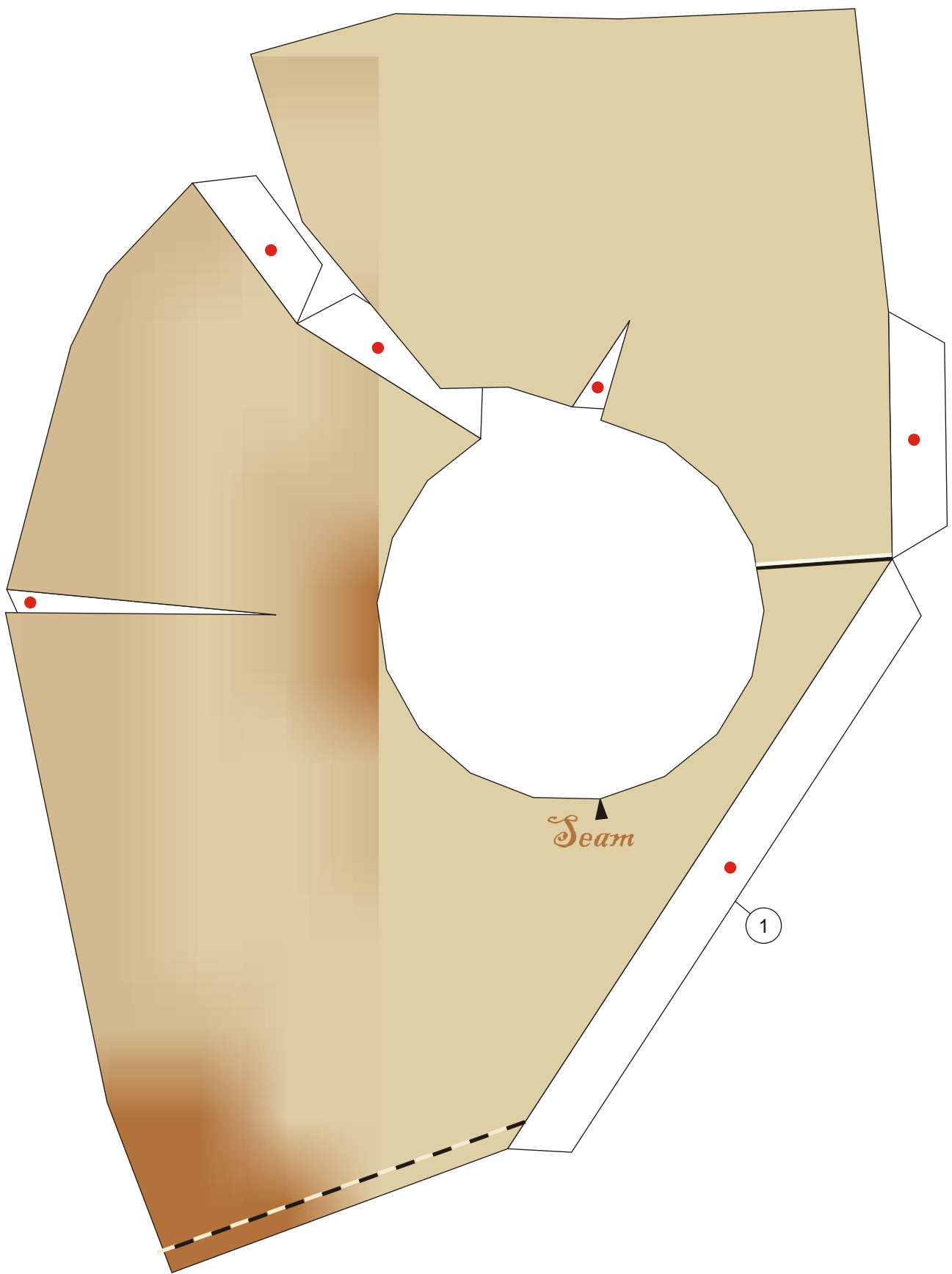
**Assembly Instructions - [click here](#)**

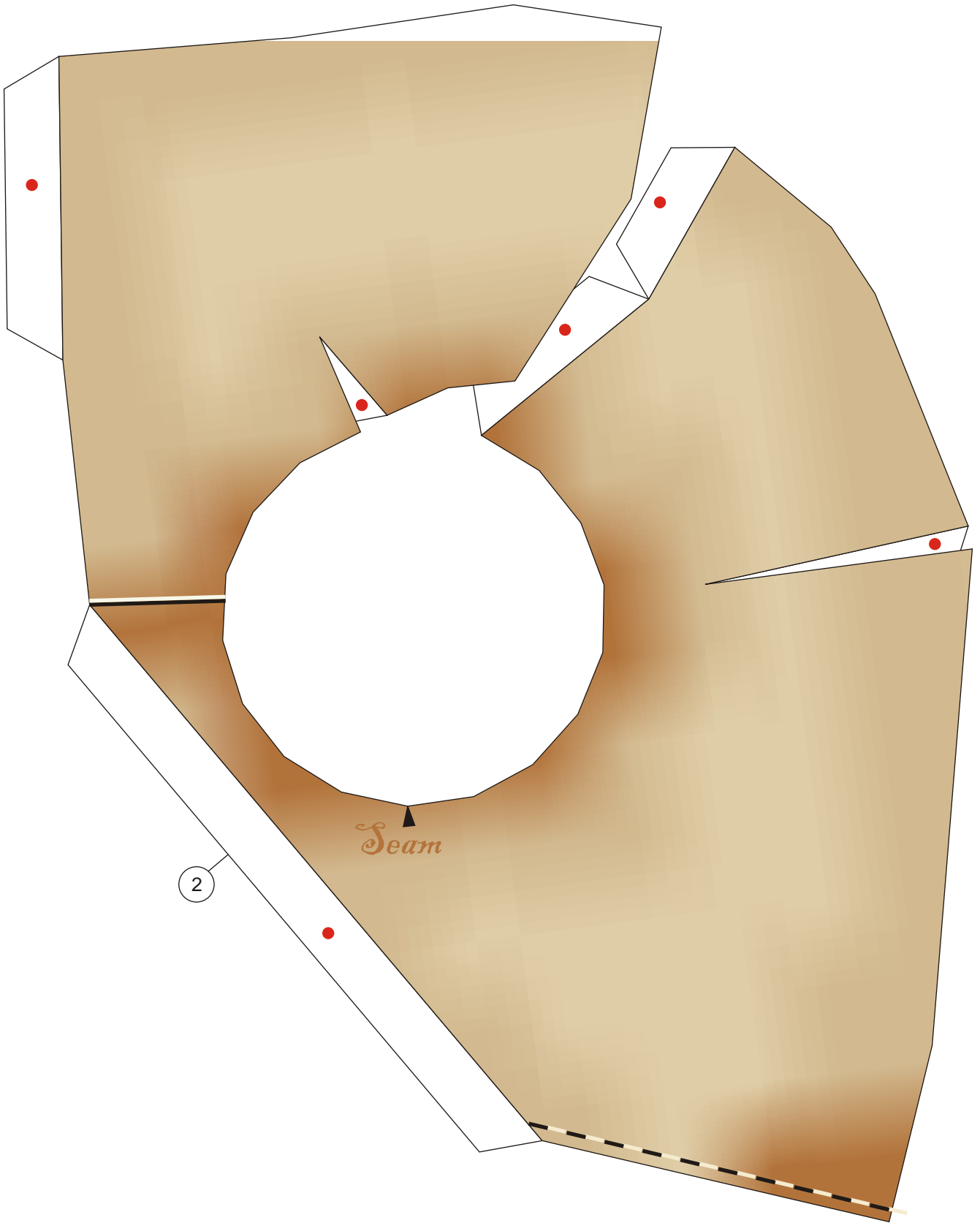
Petunjuk Perakitan

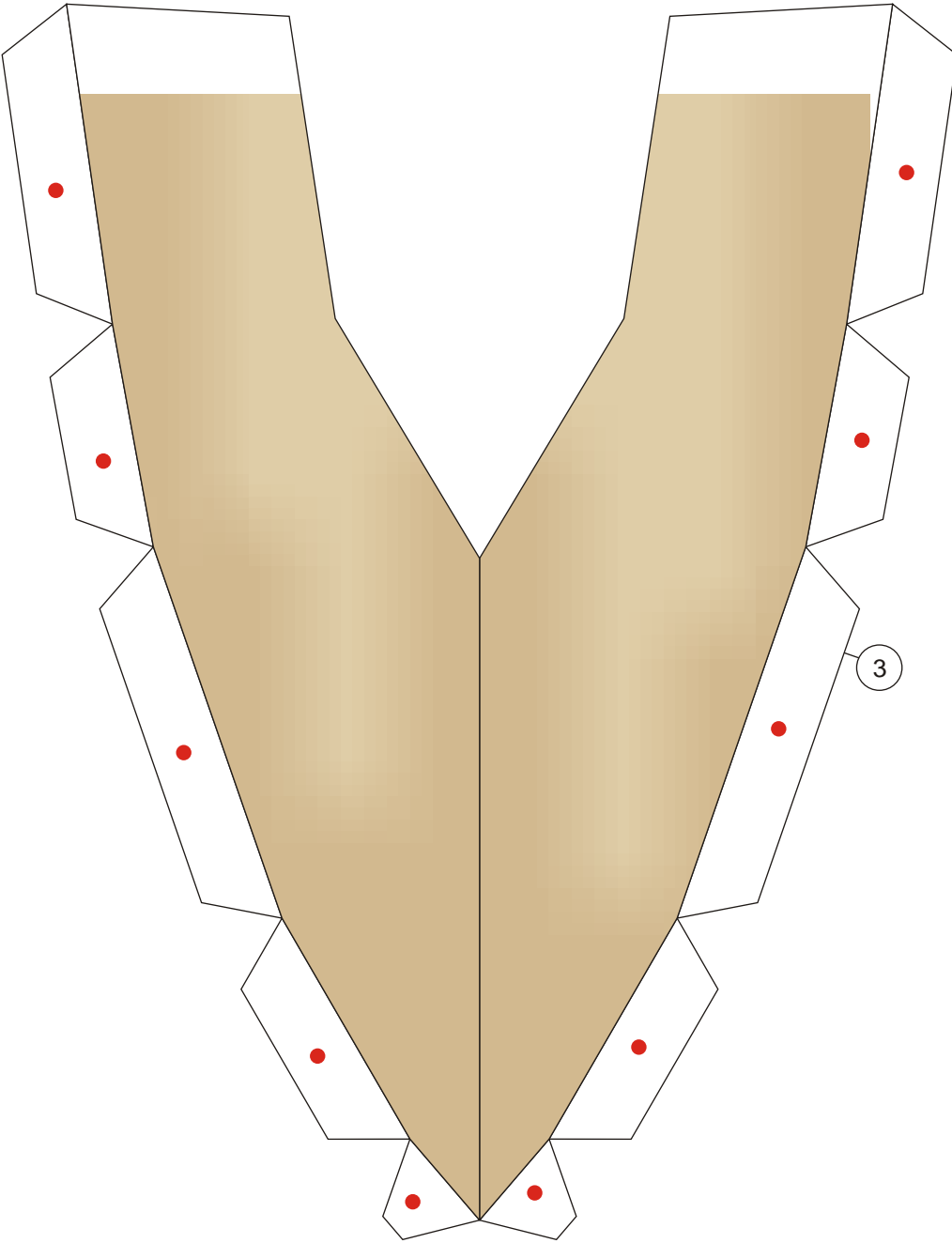
Designed by Julius Perdana - 2012

All for free models

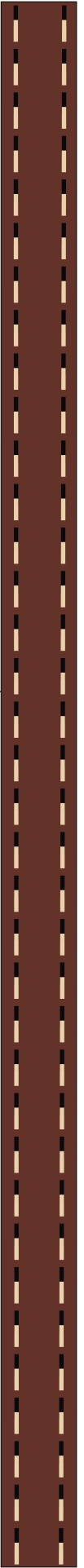
**Paper-replika.com**

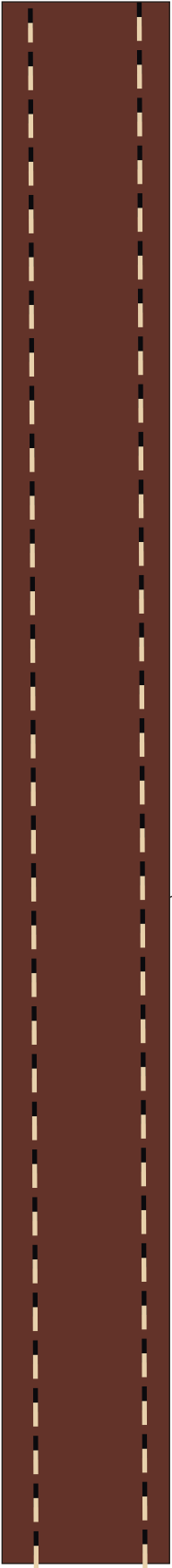






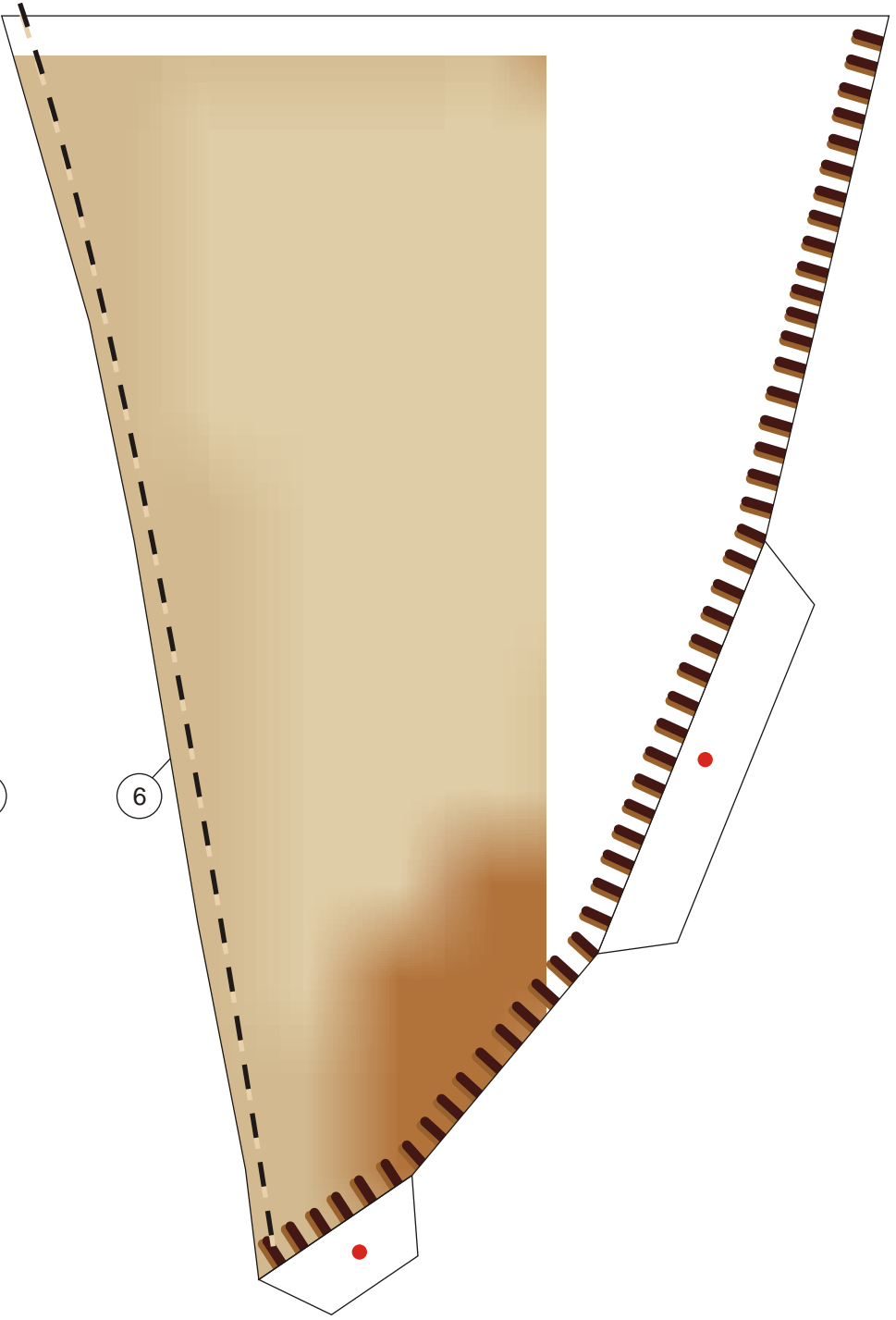
4

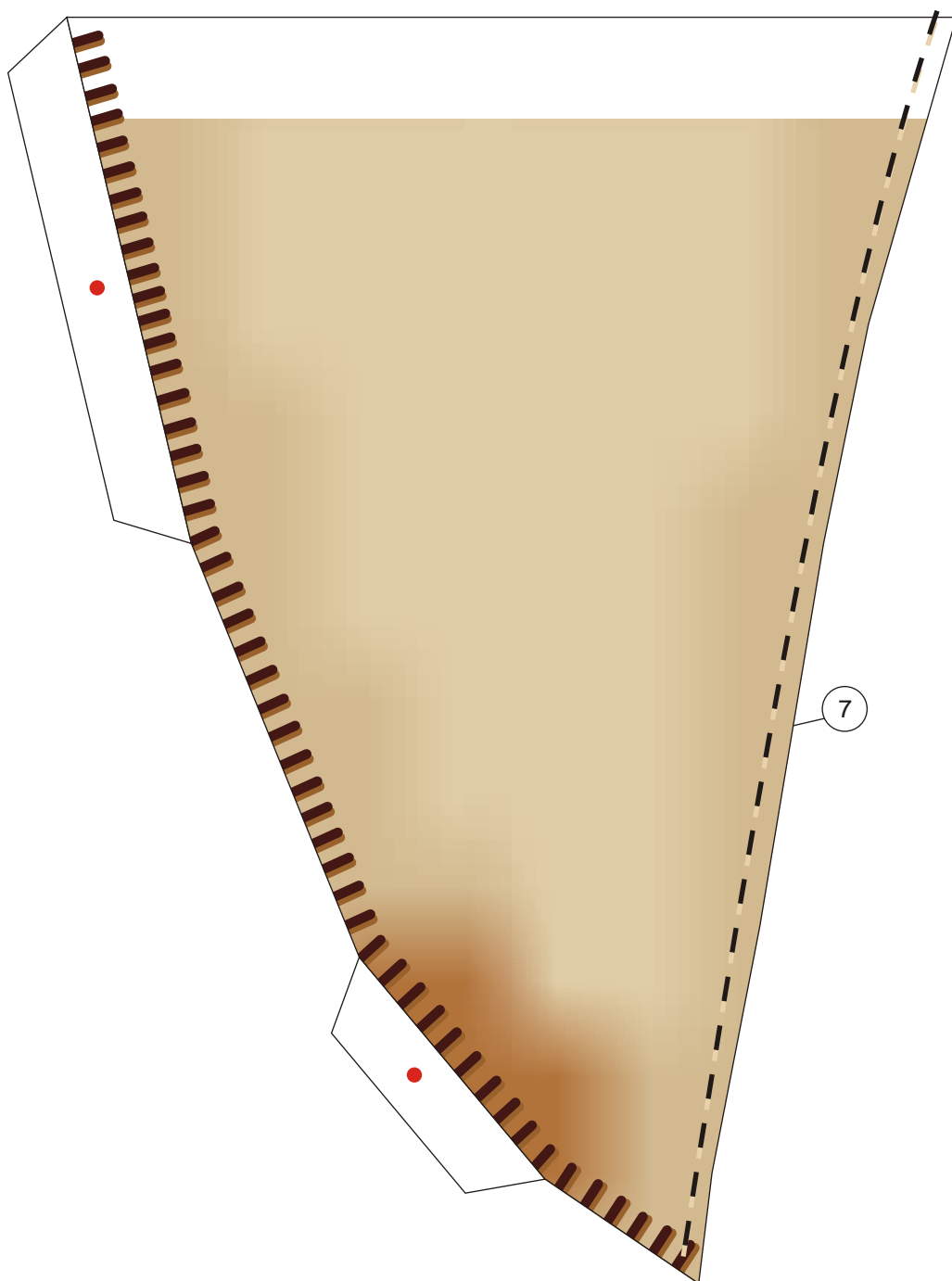




5

6





5

7

