

LEGEND

- Glue
- * Cutout - make a hole

Model : No. 0356/V/14



Resize 400% Available for helmet
Print on A3+ (325 x 487) for ideal size

Optimus Prime - Age of Extinction

Transformers 4 Papercraft - Head

The new Optimus Prime in Transformers 4 movie is completely a different prime from the other sequels. Transformers 1-2 were with the same design, and then a bit different seen in Transformers 3, but the Prime in Transformers 4 looks kind of tribal and a lot cooler in my opinion. From the poll result in Paper Replika Facebook group they are many fans who loved to see the new Optimus Prime in papercraft. This time I would not make as complicated as the previous big Optimus, I will make it about half that size, about 70 cm in height. I also reduce the complexity from hard to medium, but I will still maintaining the detailed looks that Optimus Prime has. As usual this paper model series will be released part by part, I plan to finish all of it in about 2-3 months. The first part is this head. The head itself when completed will have about 8 cm in height. There will be blank template available.

Assembly Instructions - click here

Petunjuk Perakitan

DISCLAIMER

Paper-replika is not affiliated or representation of Dreamworks SKG or Hasbro. Paper-replika is a nonprofit un official fan & hobby site. This is a fan made model,

DO NOT USE FOR ANY COMMERCIAL PURPOSES, PLEASE USE FOR PERSONAL USE ONLY.

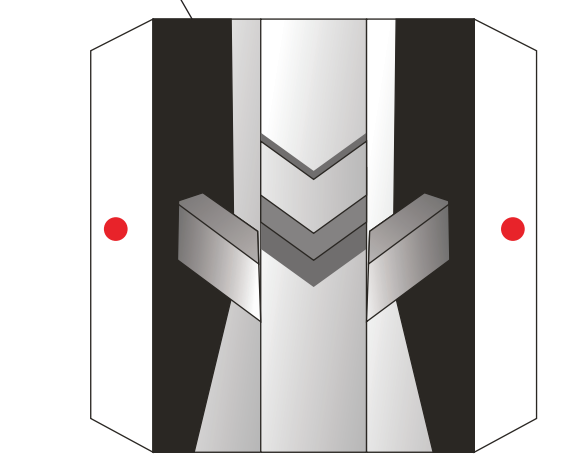
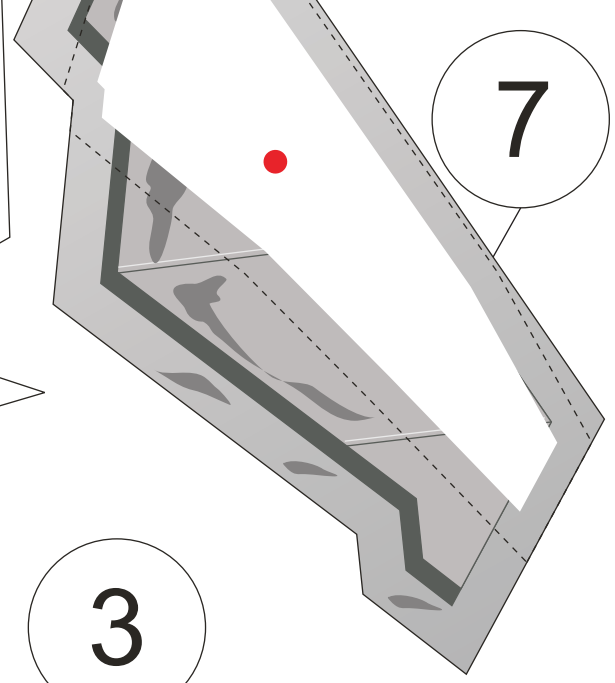
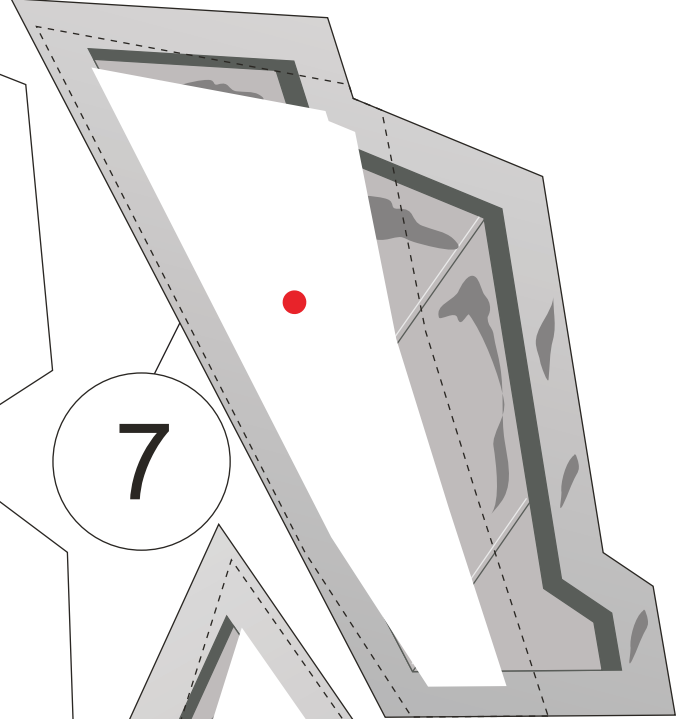
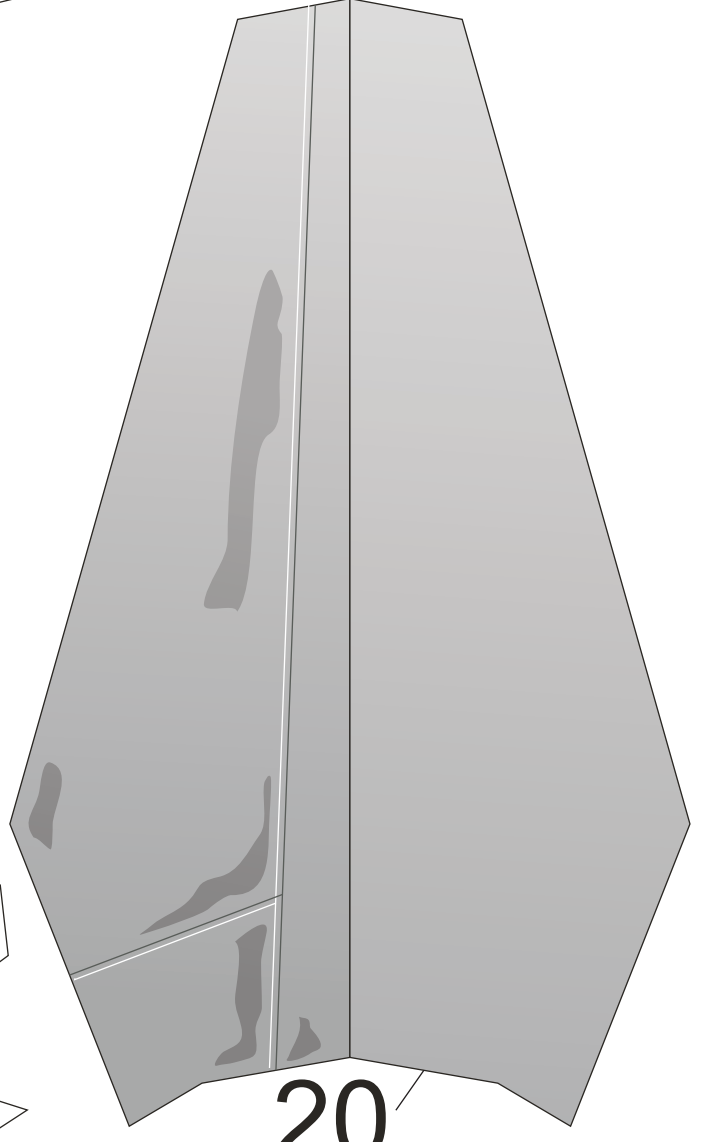
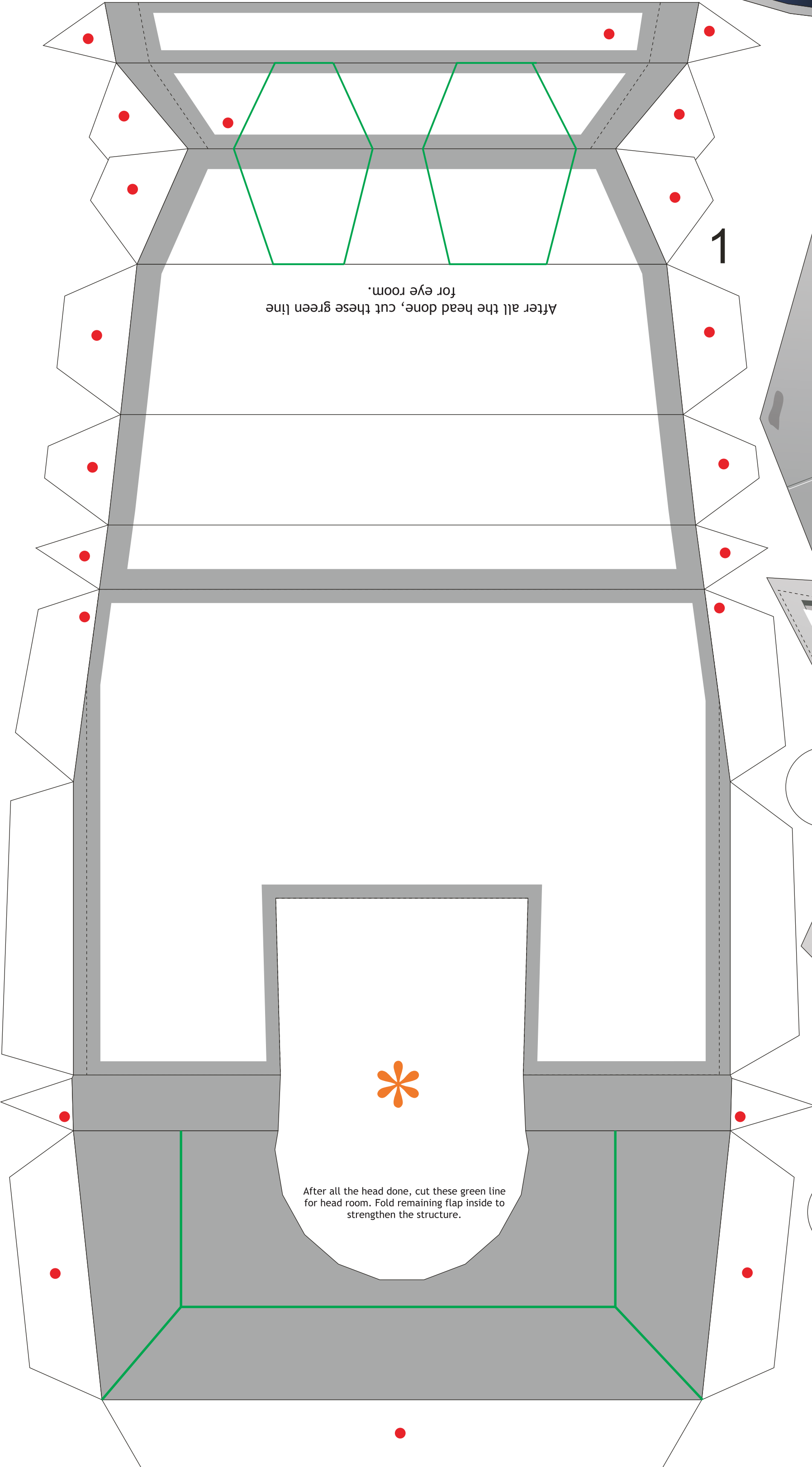
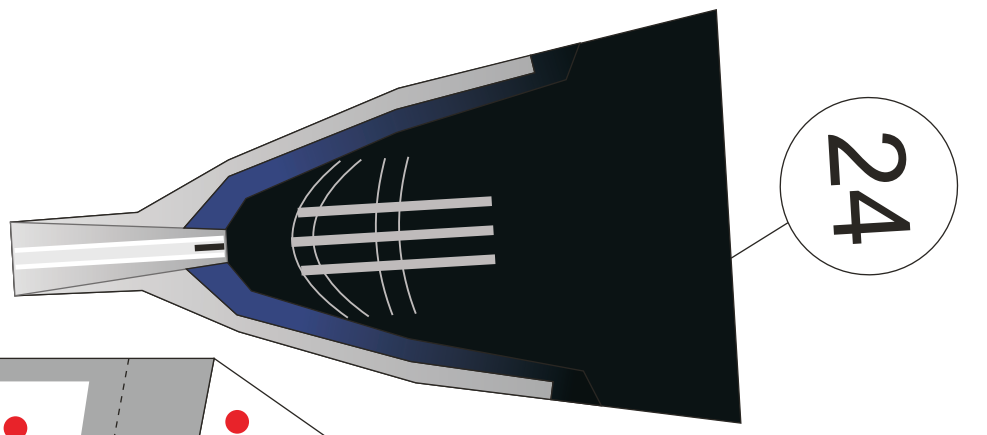
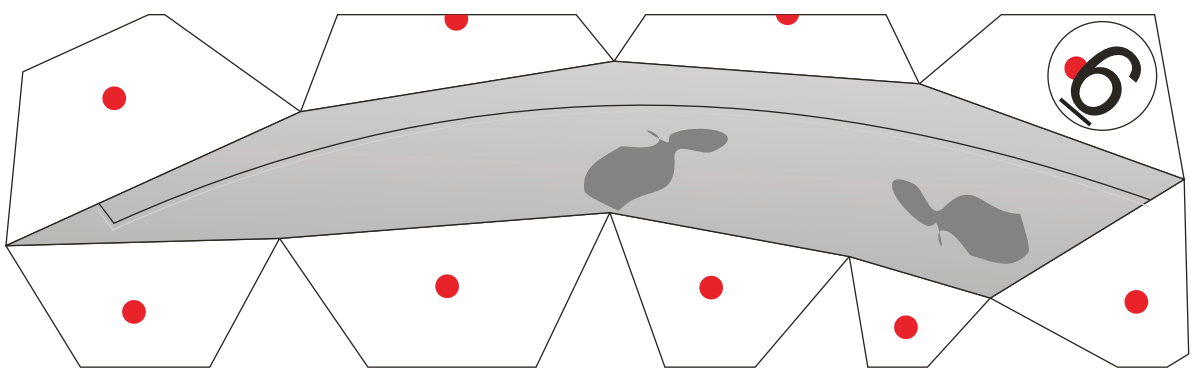
All trademarks mentioned is belong to its respective owners - **Hasbro - Dreamworks SKG**

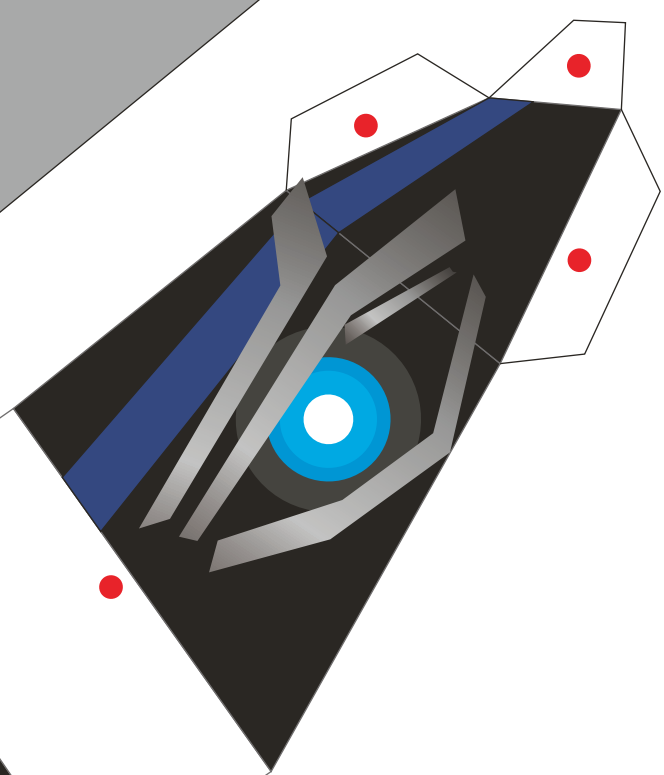
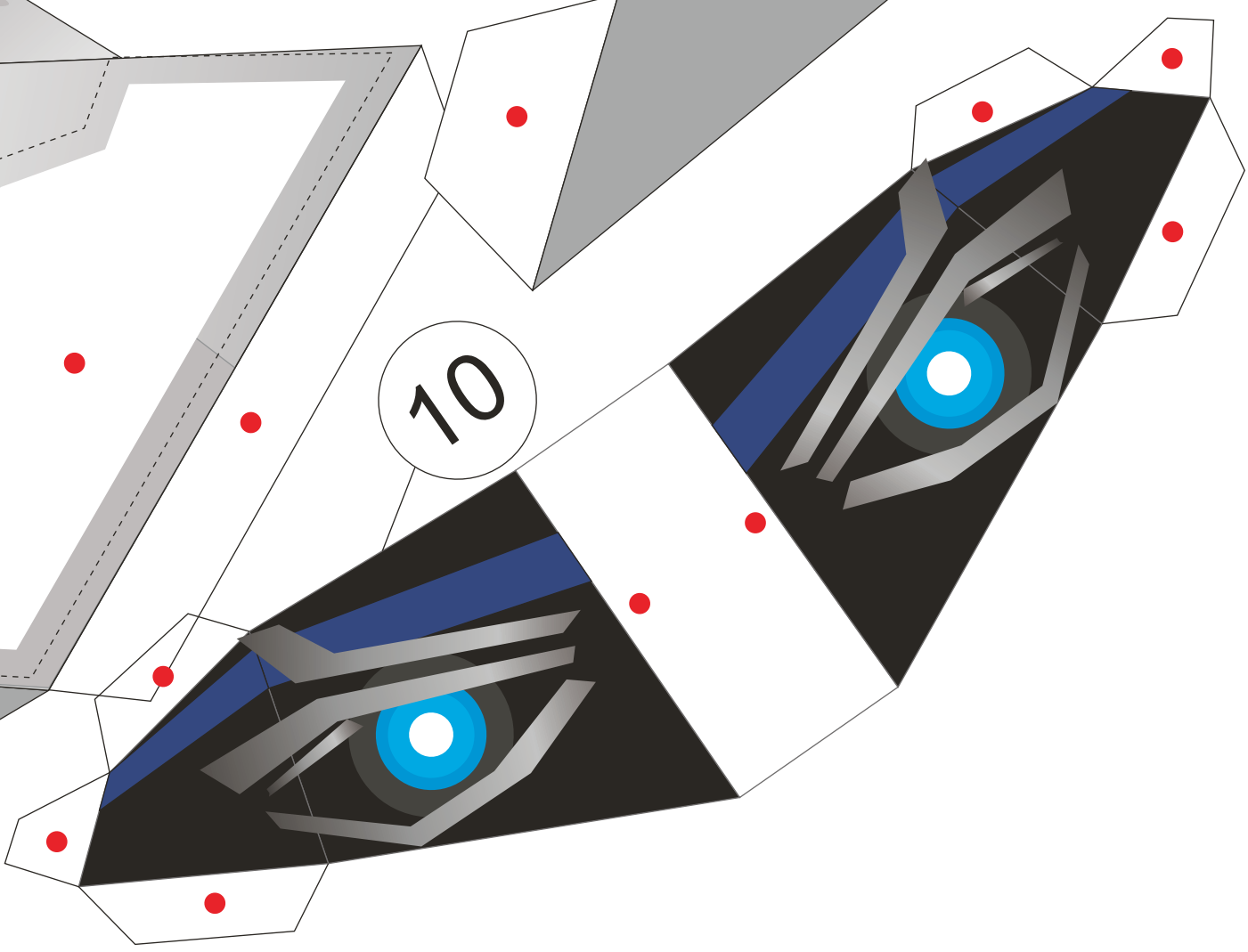
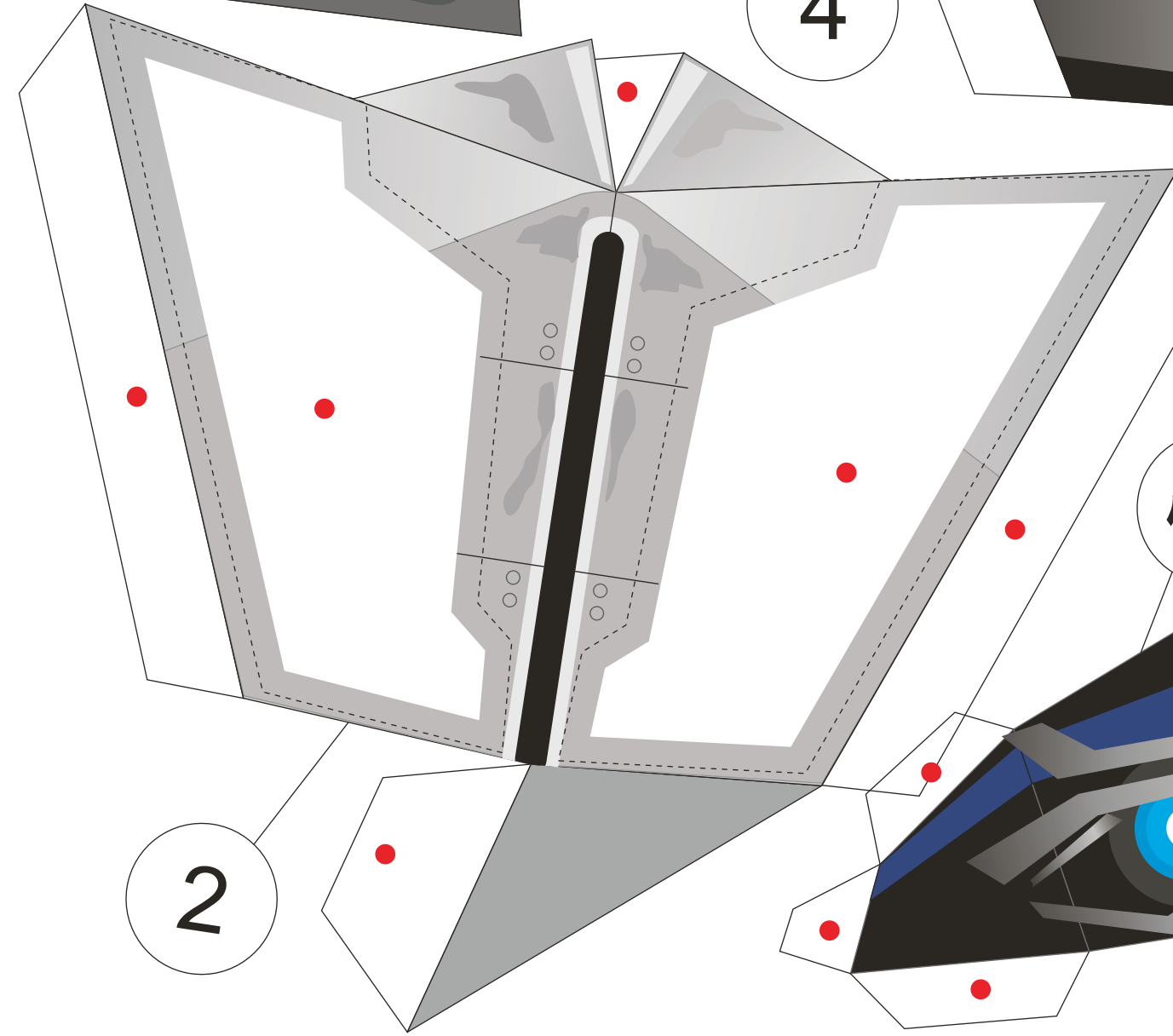
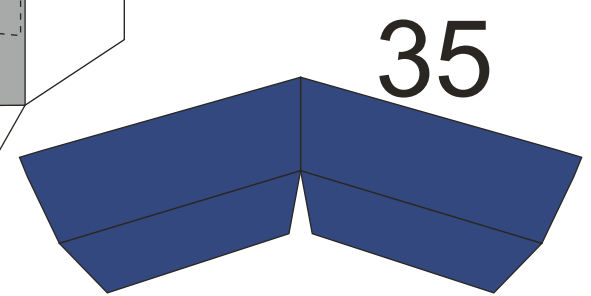
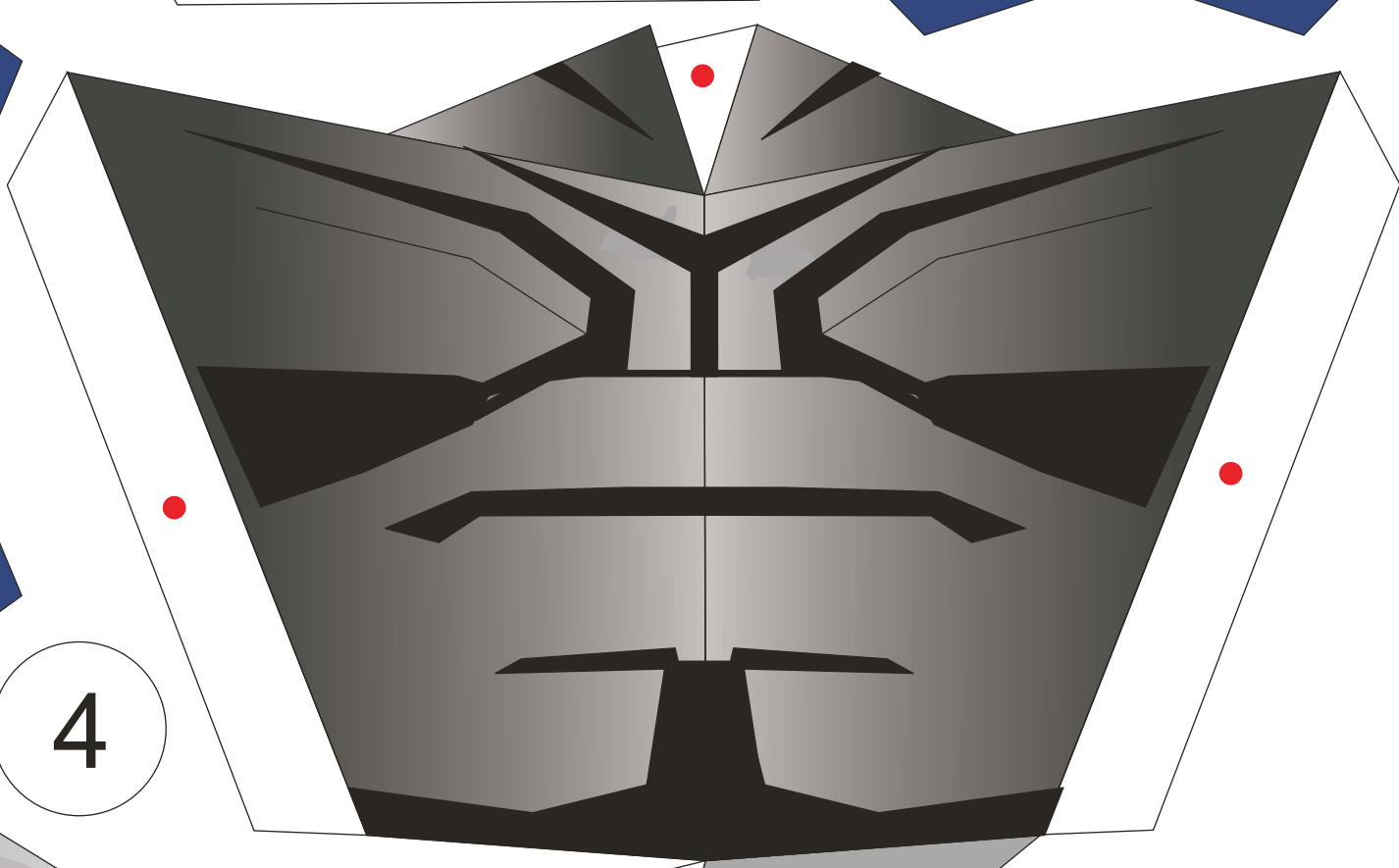
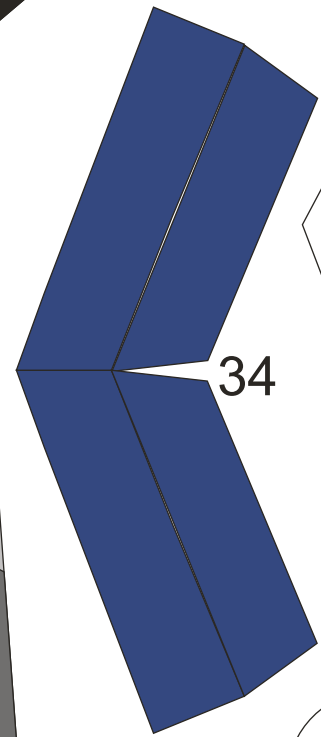
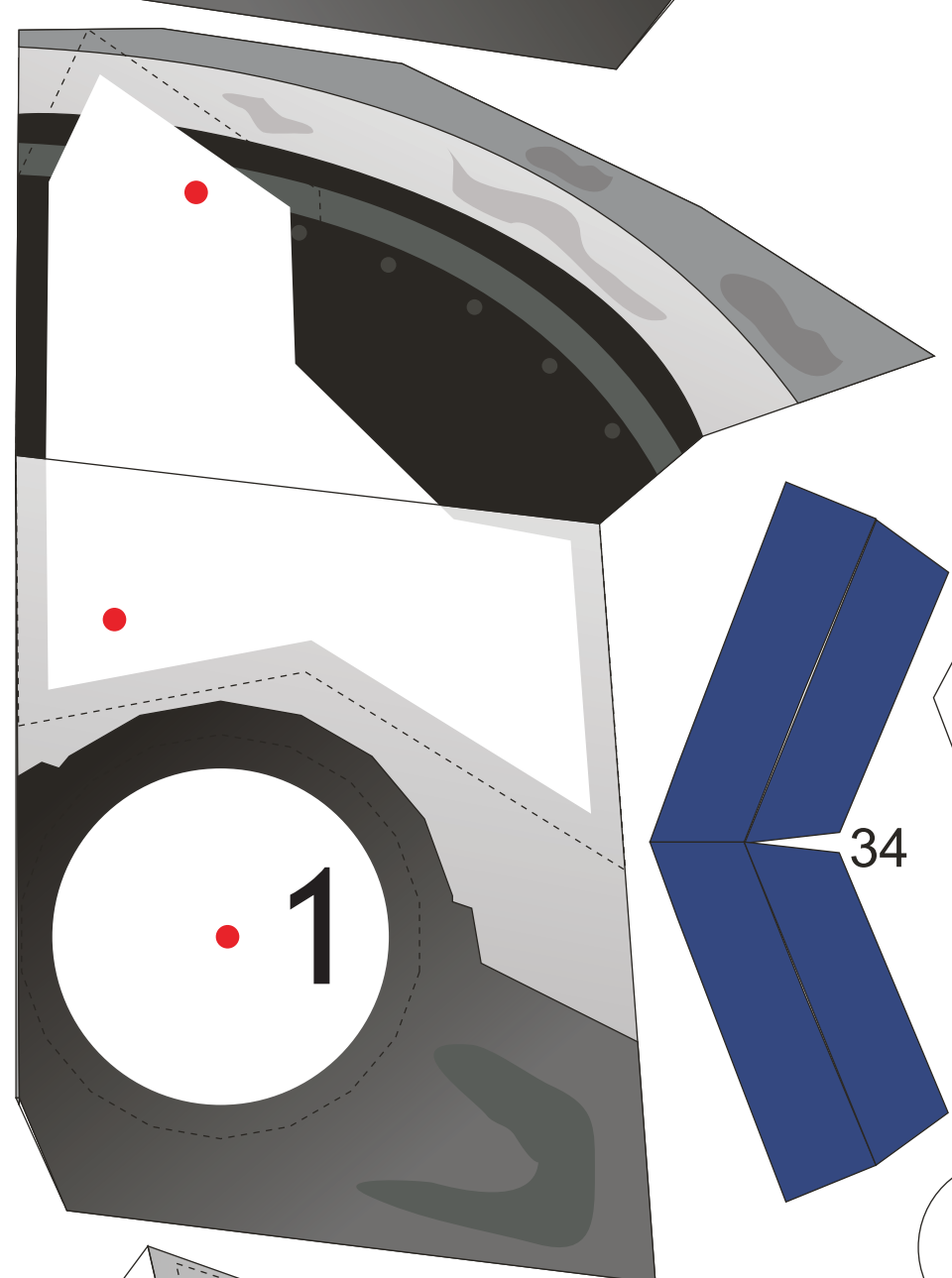
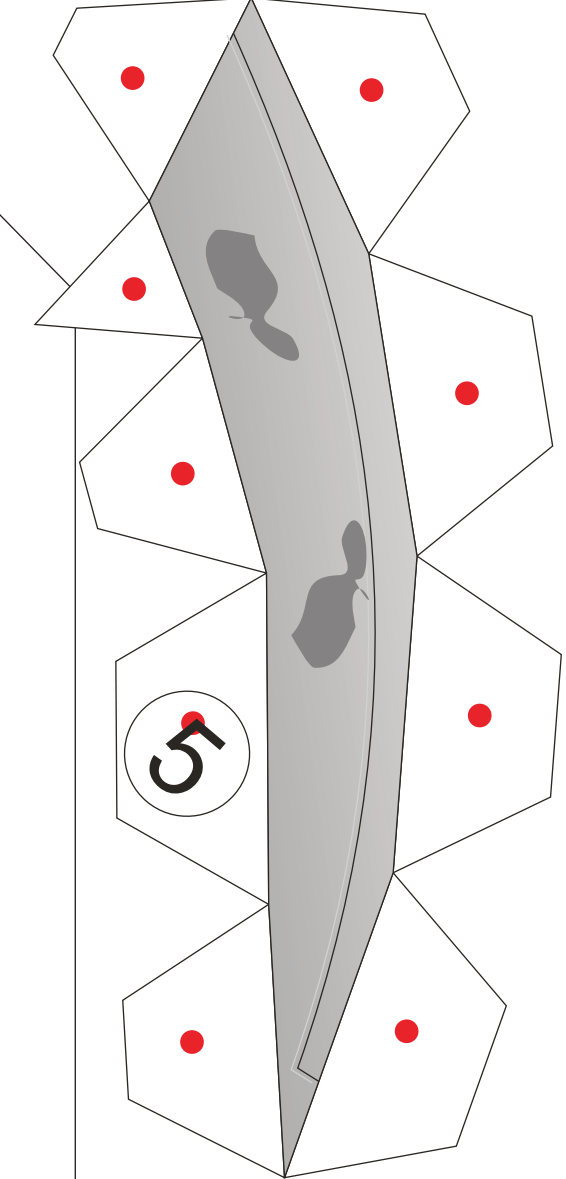
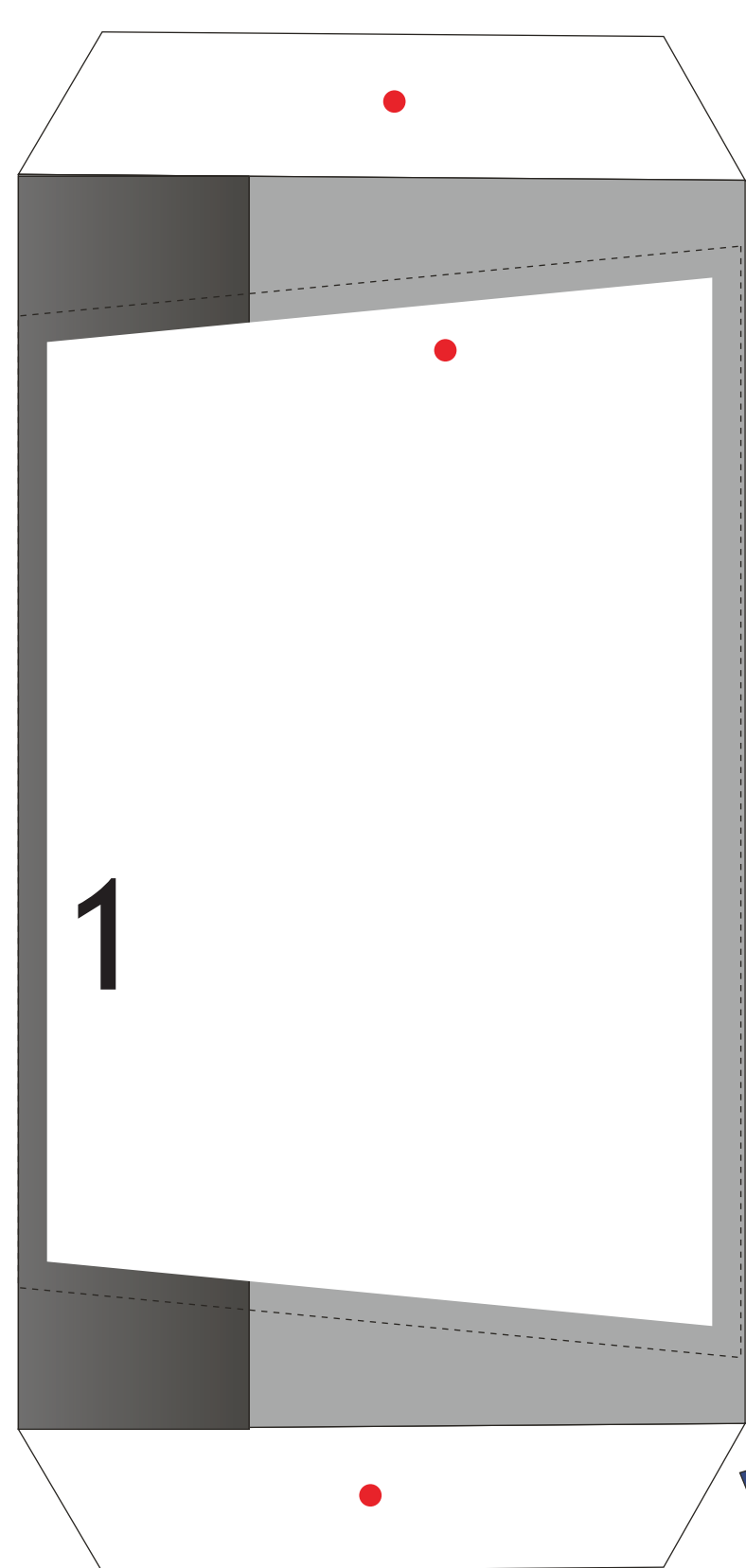
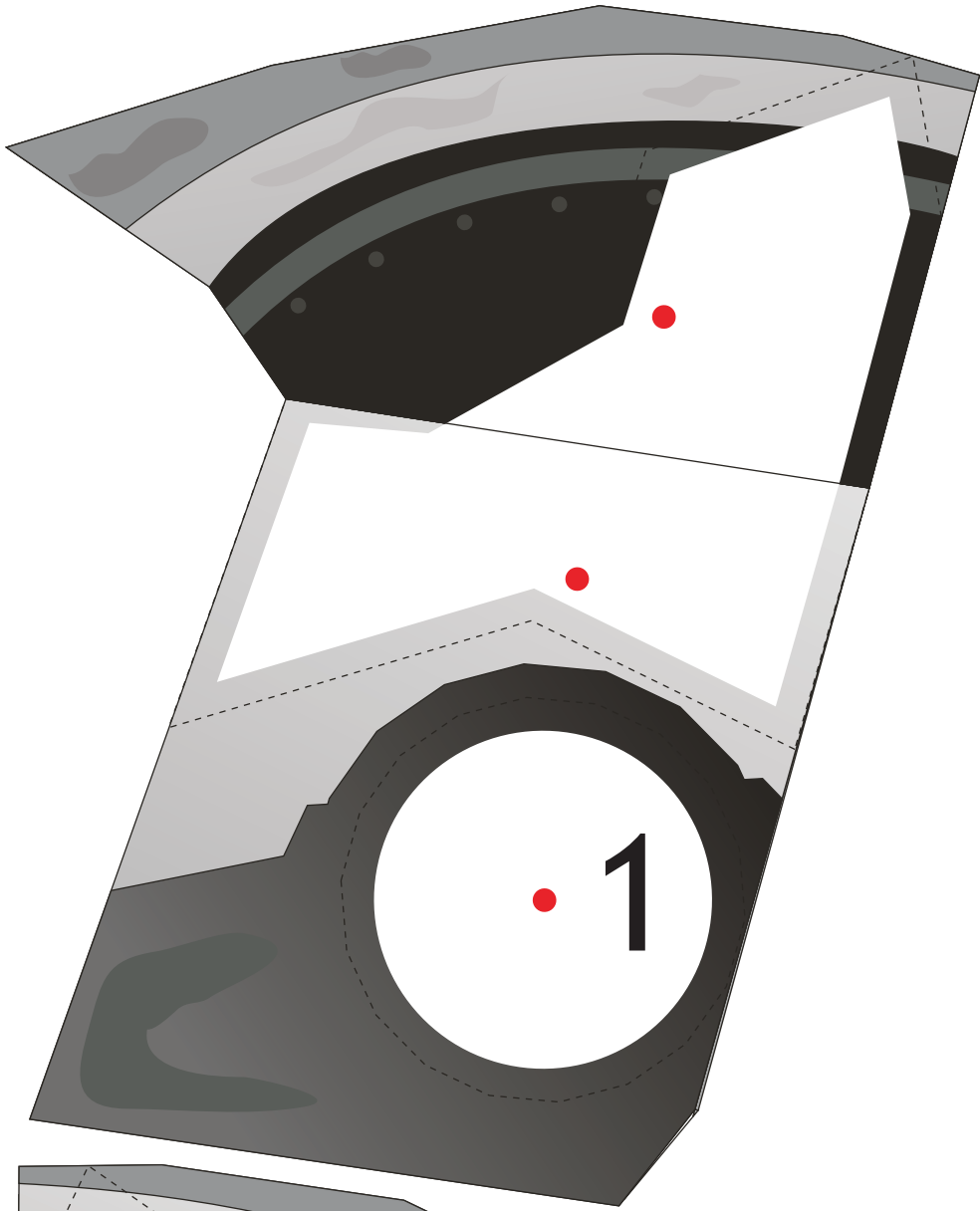
Visit : www.transformersmovie.com

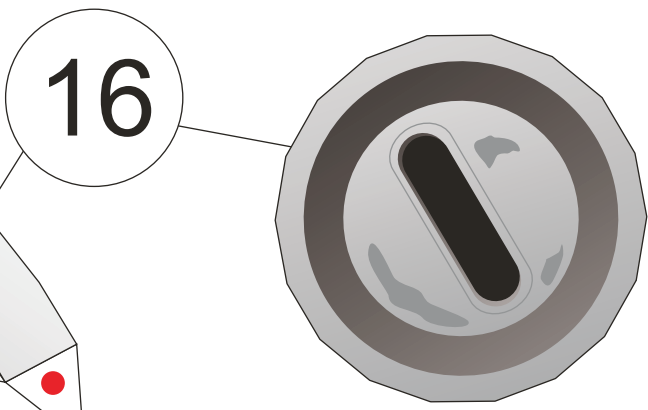
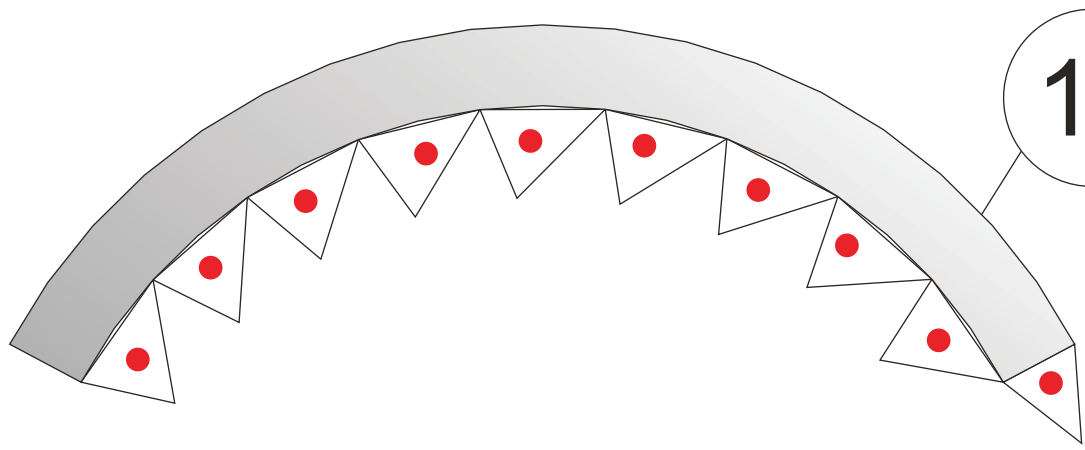
papercraft by Julius Perdana 2014

All for free models

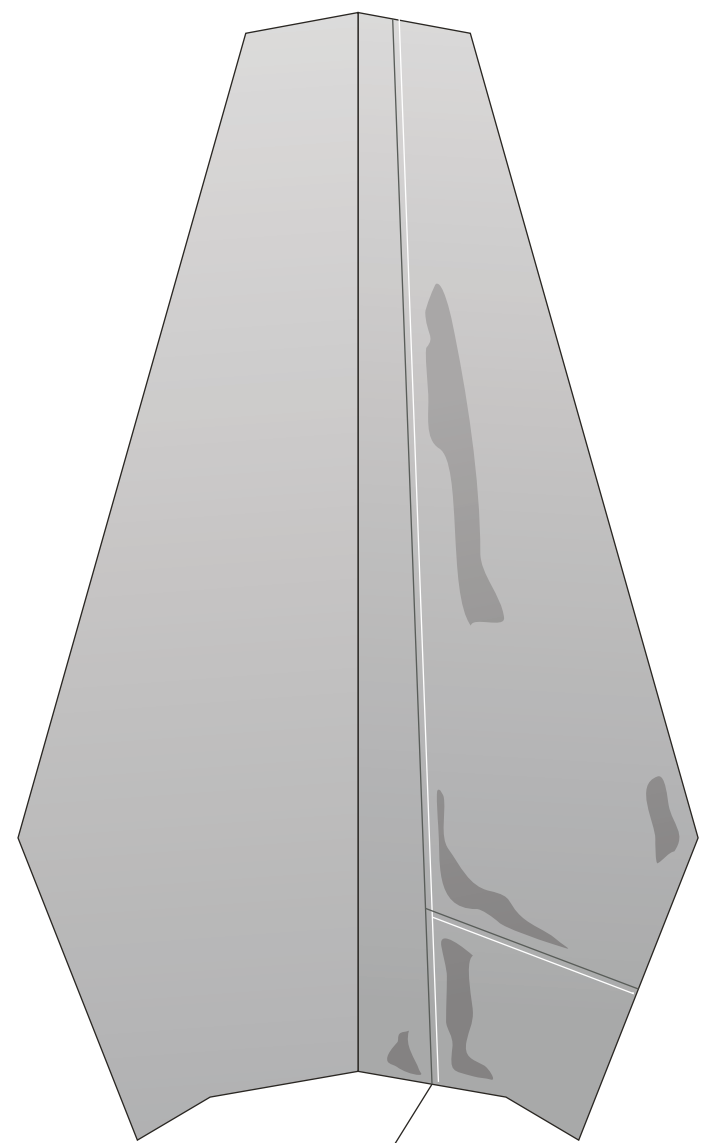
Paper-replika.com





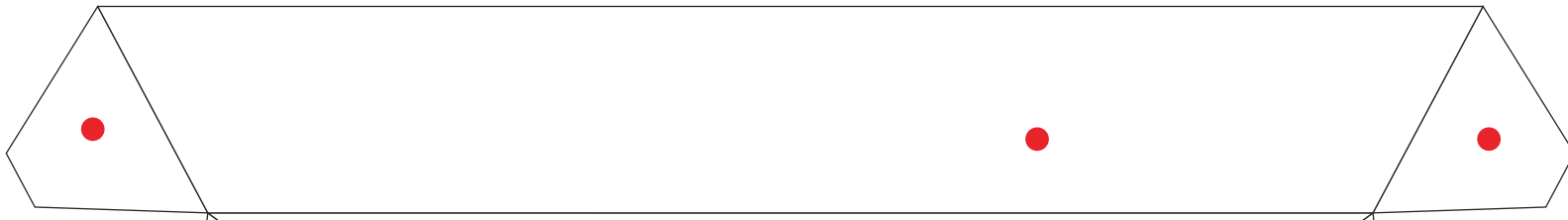


16

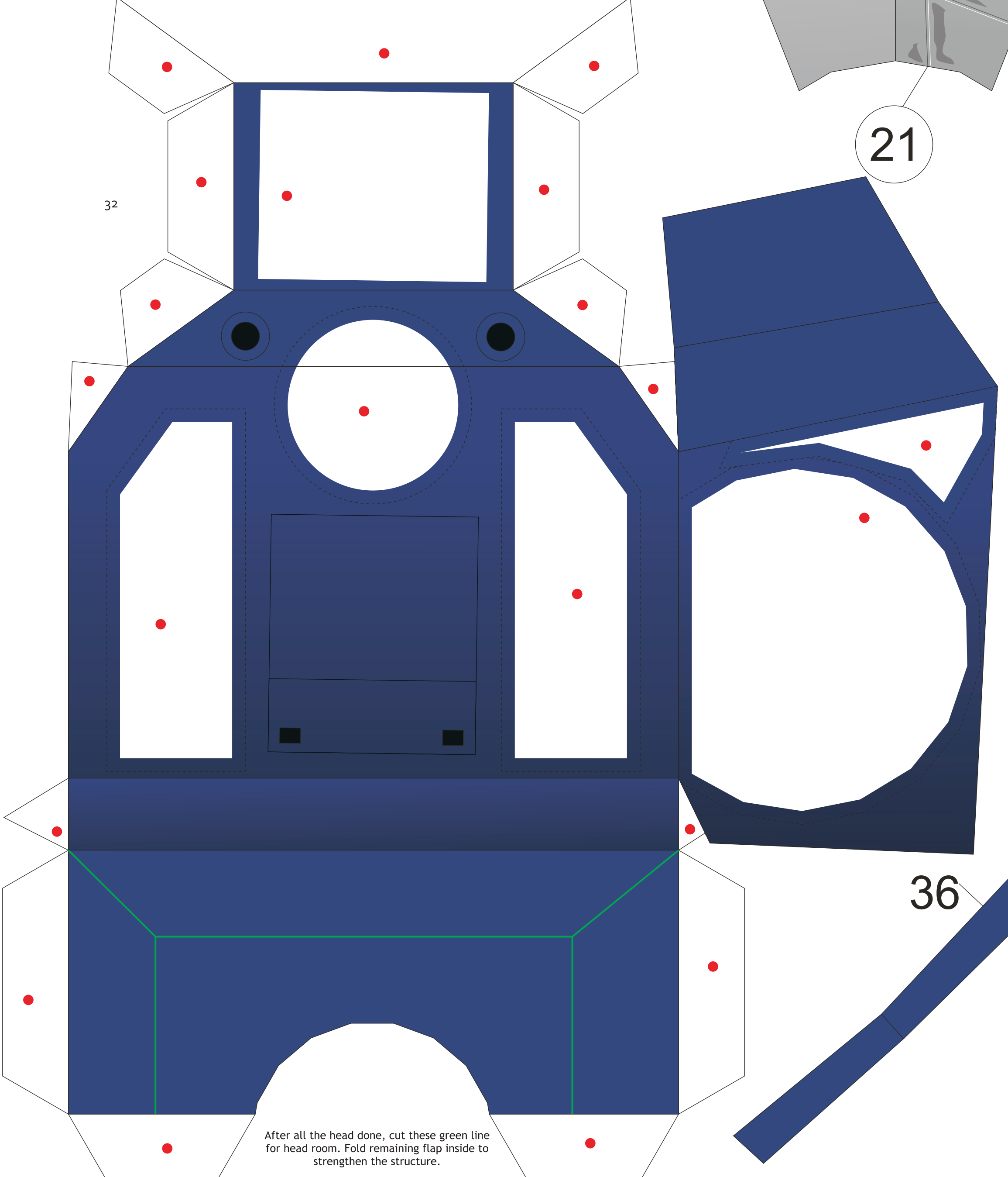


21

32

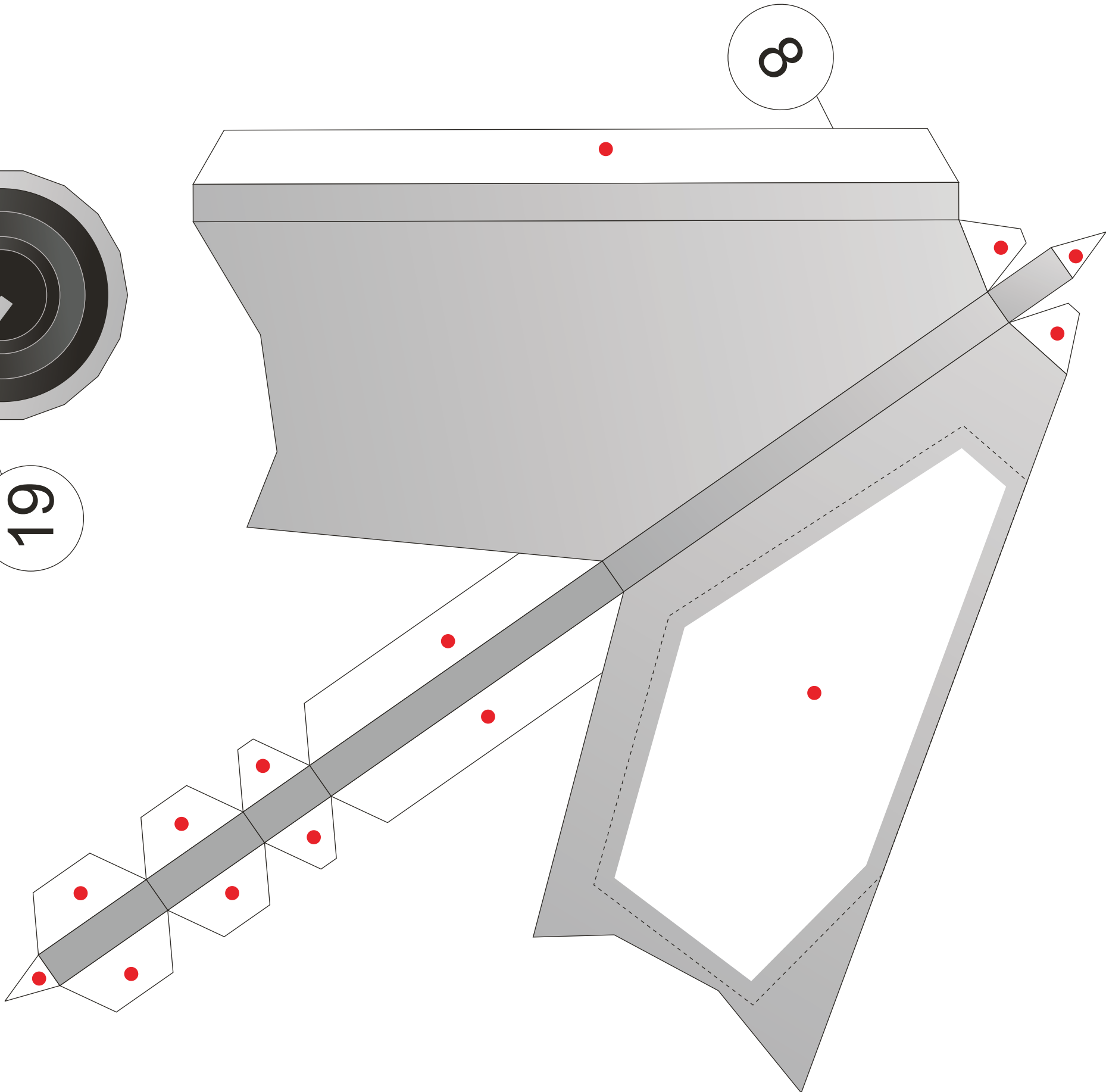
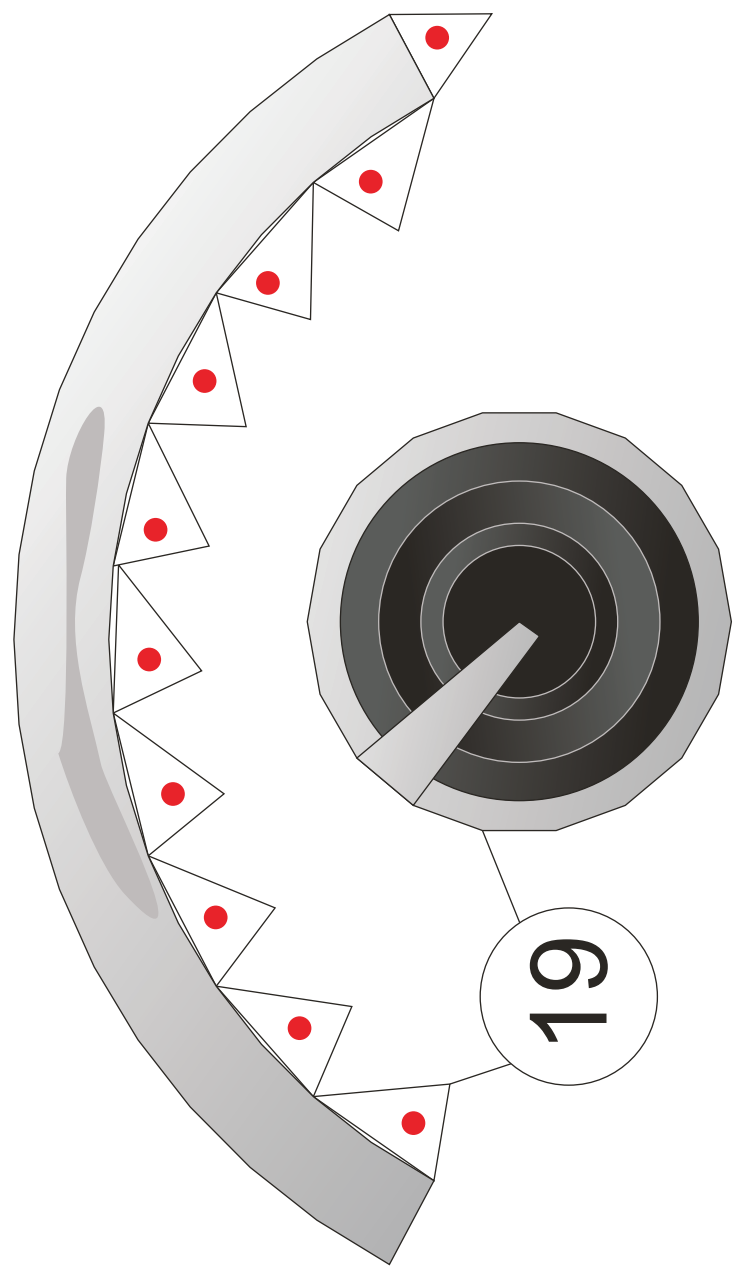
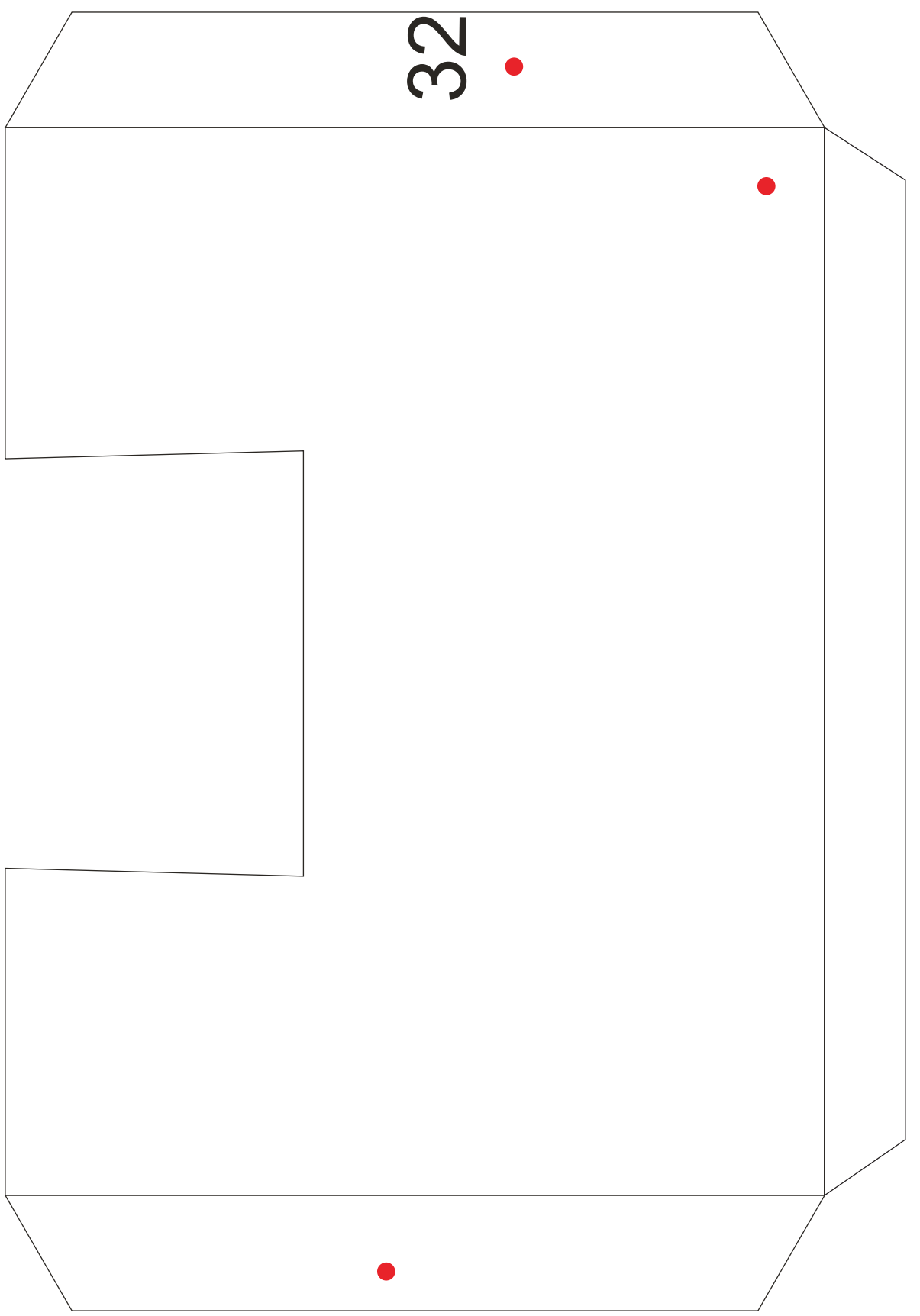
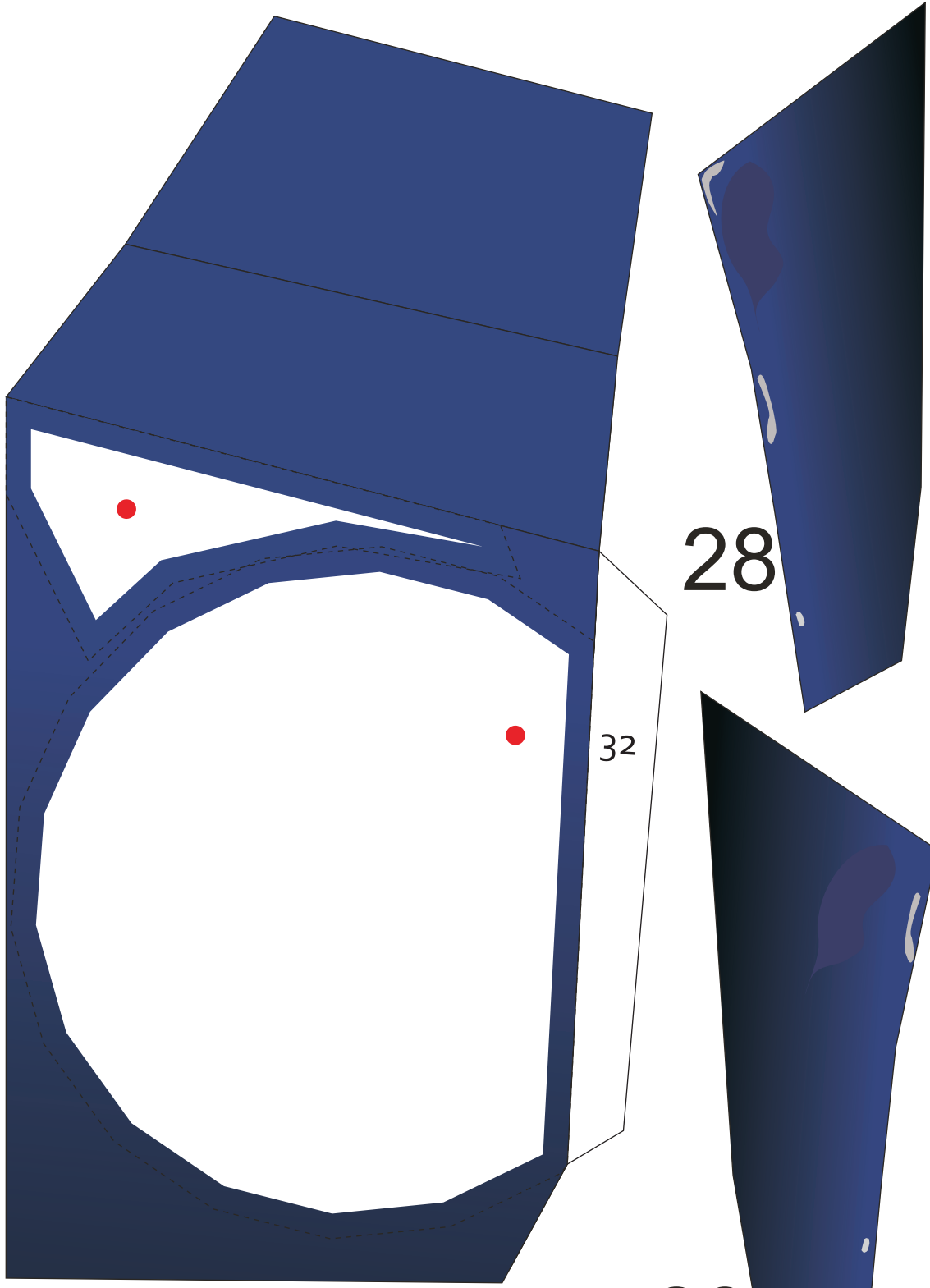


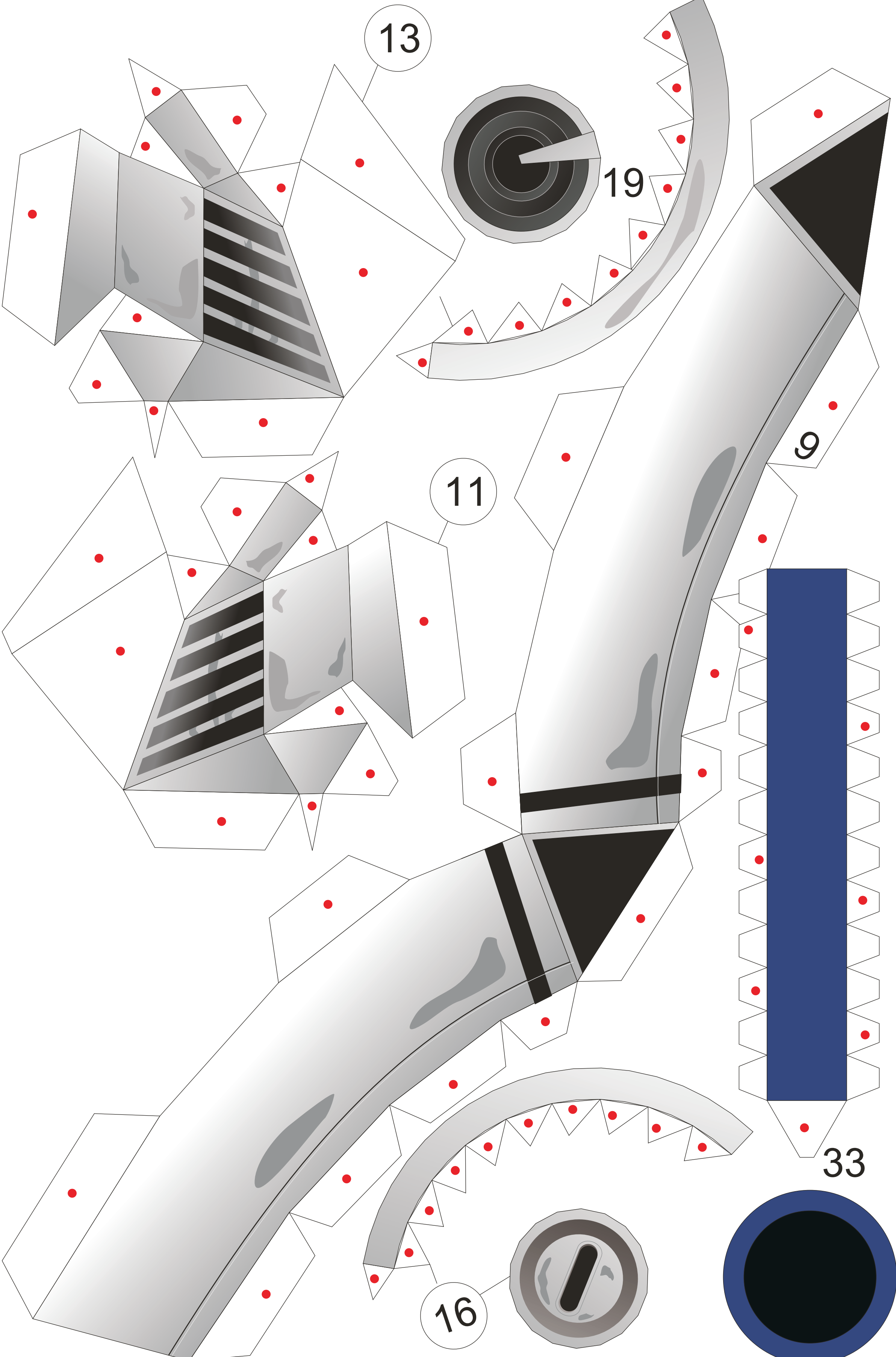
32

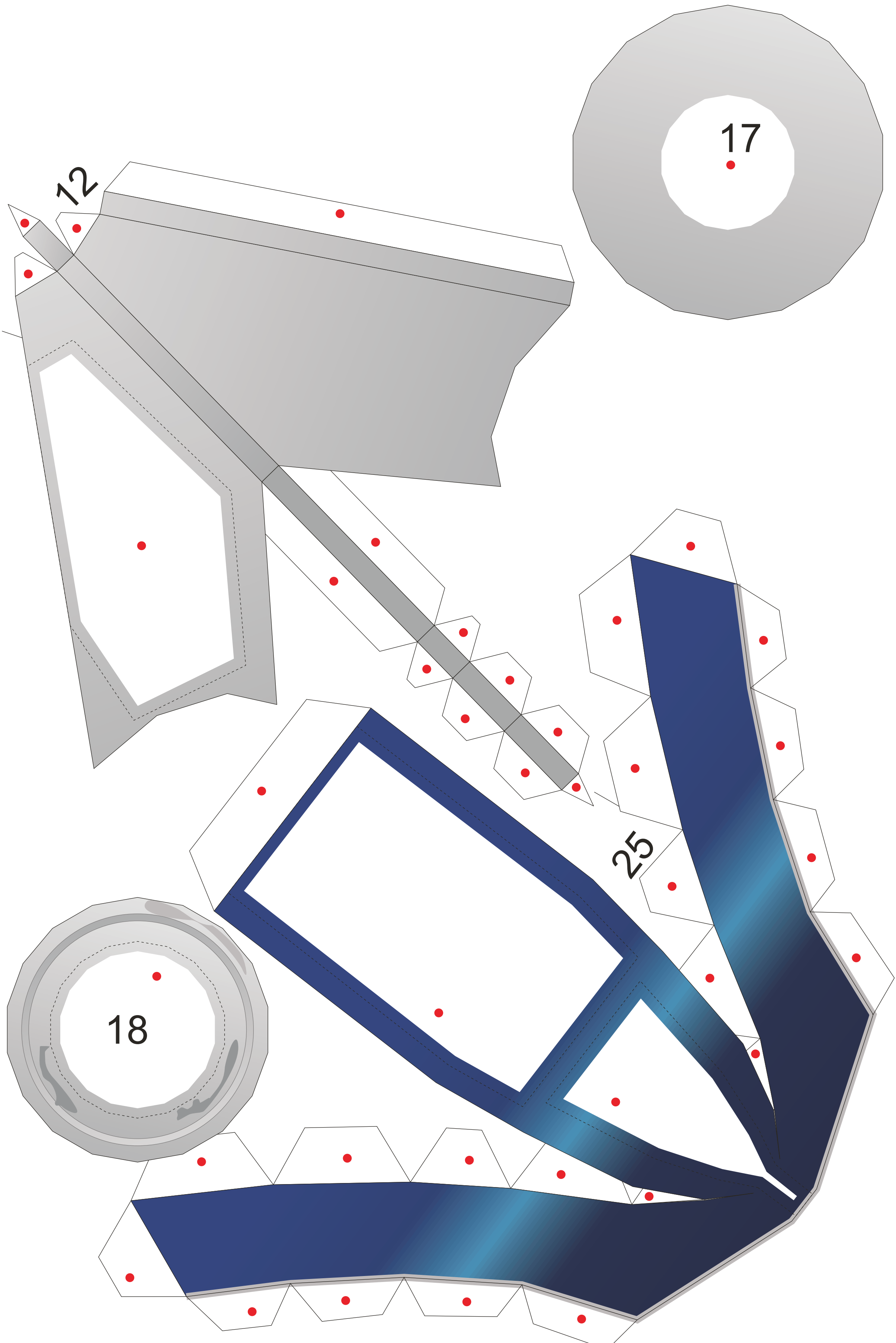


36

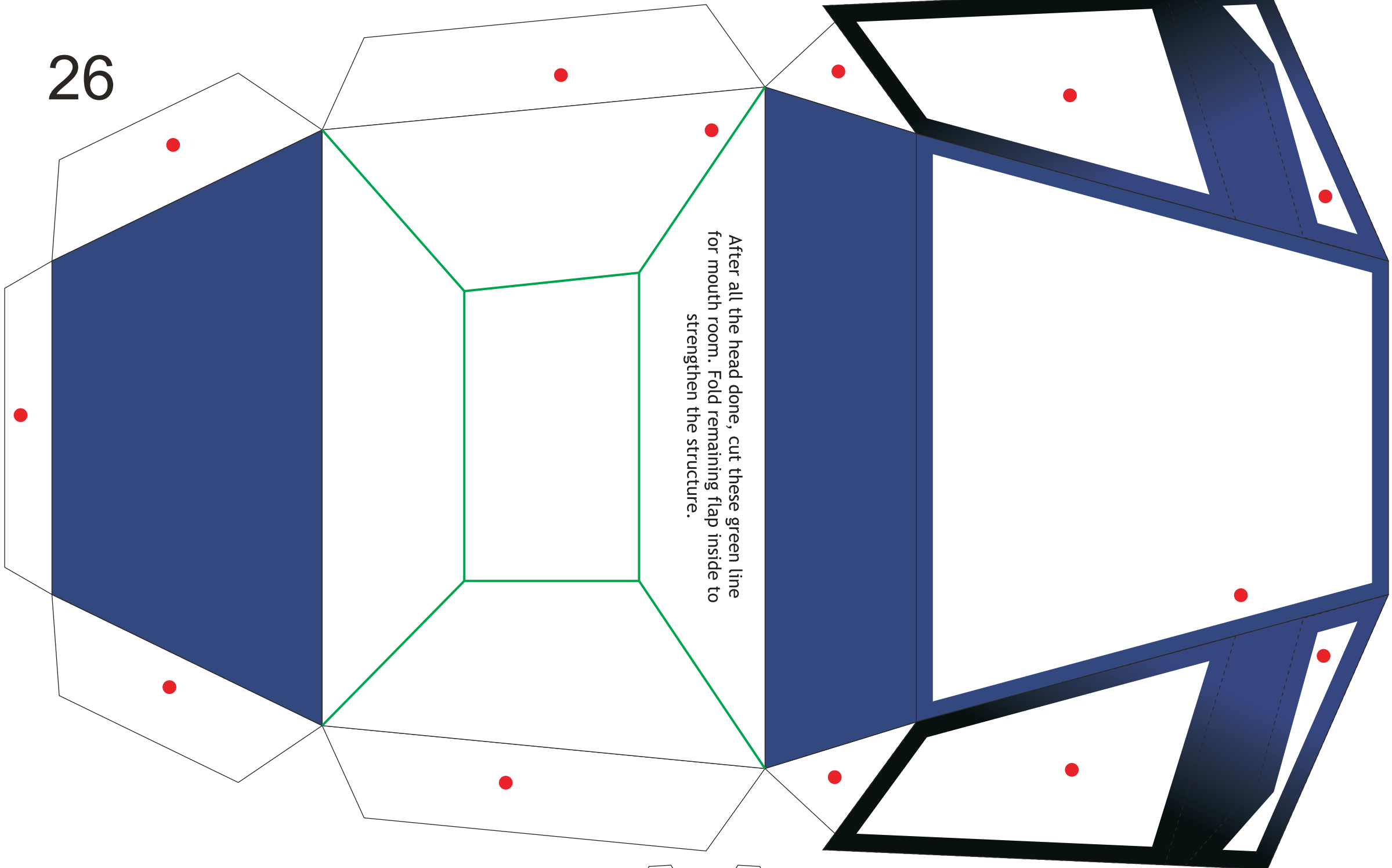
After all the head done, cut these green line for head room. Fold remaining flap inside to strengthen the structure.







26

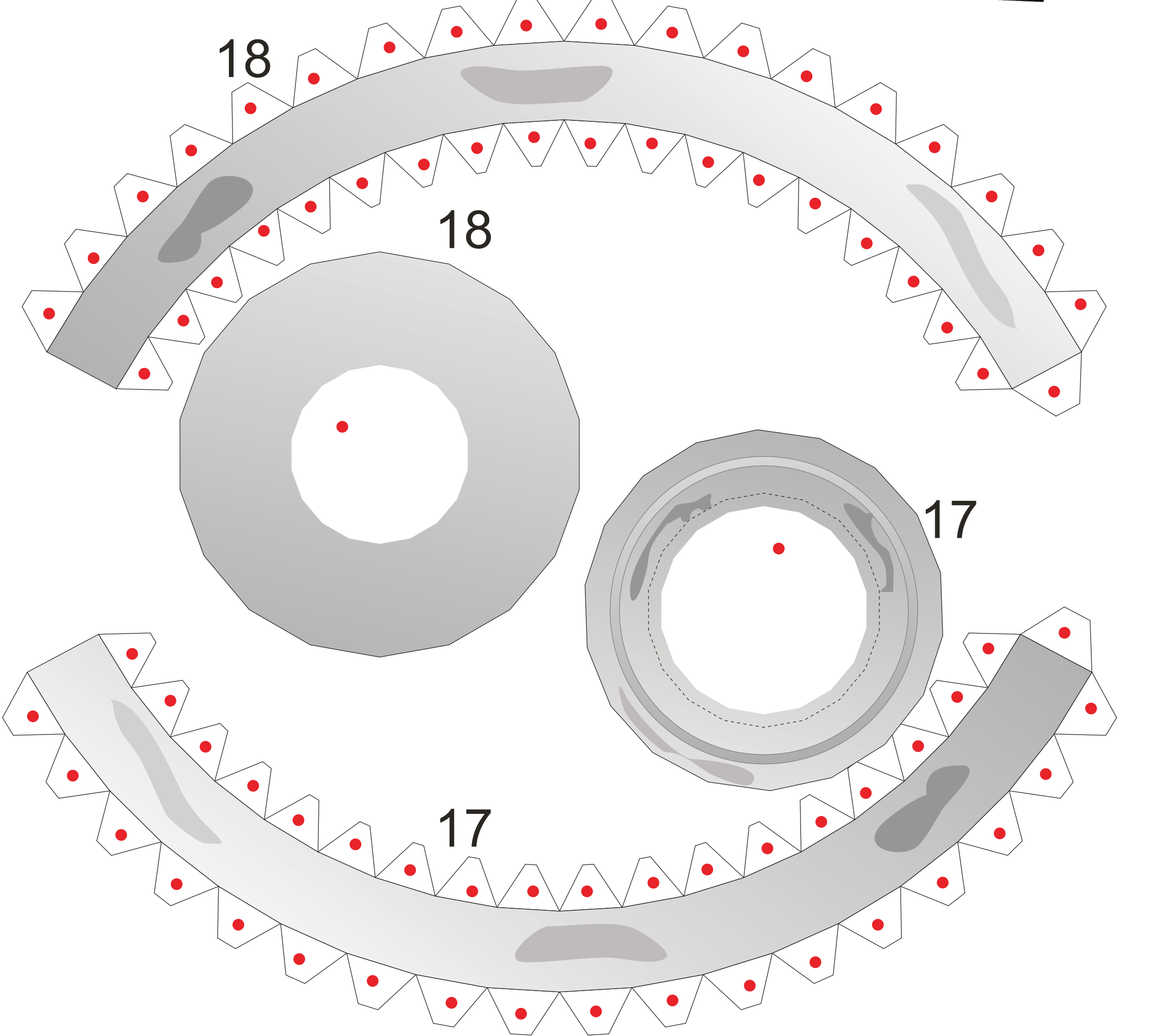


18

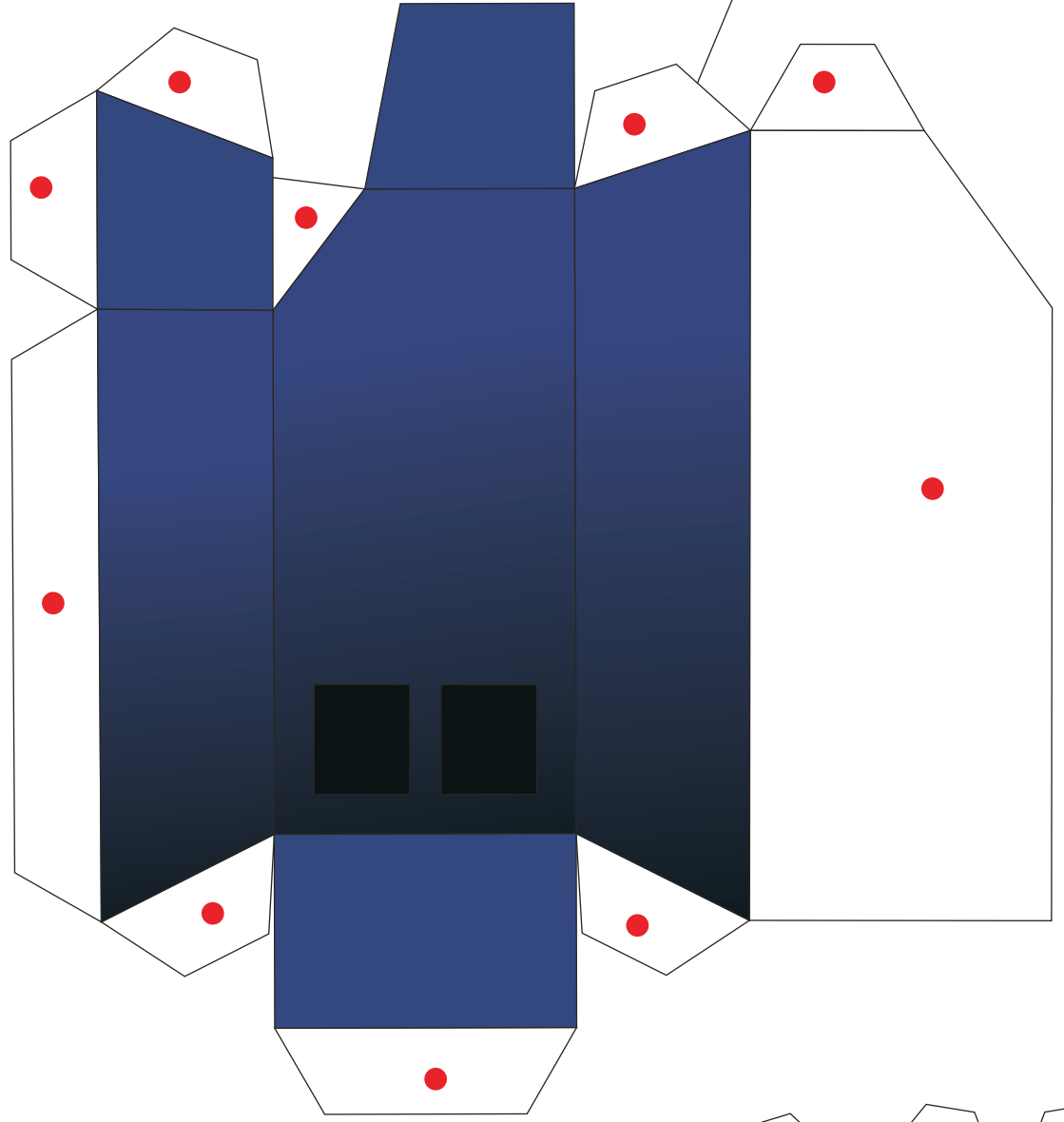
18

17

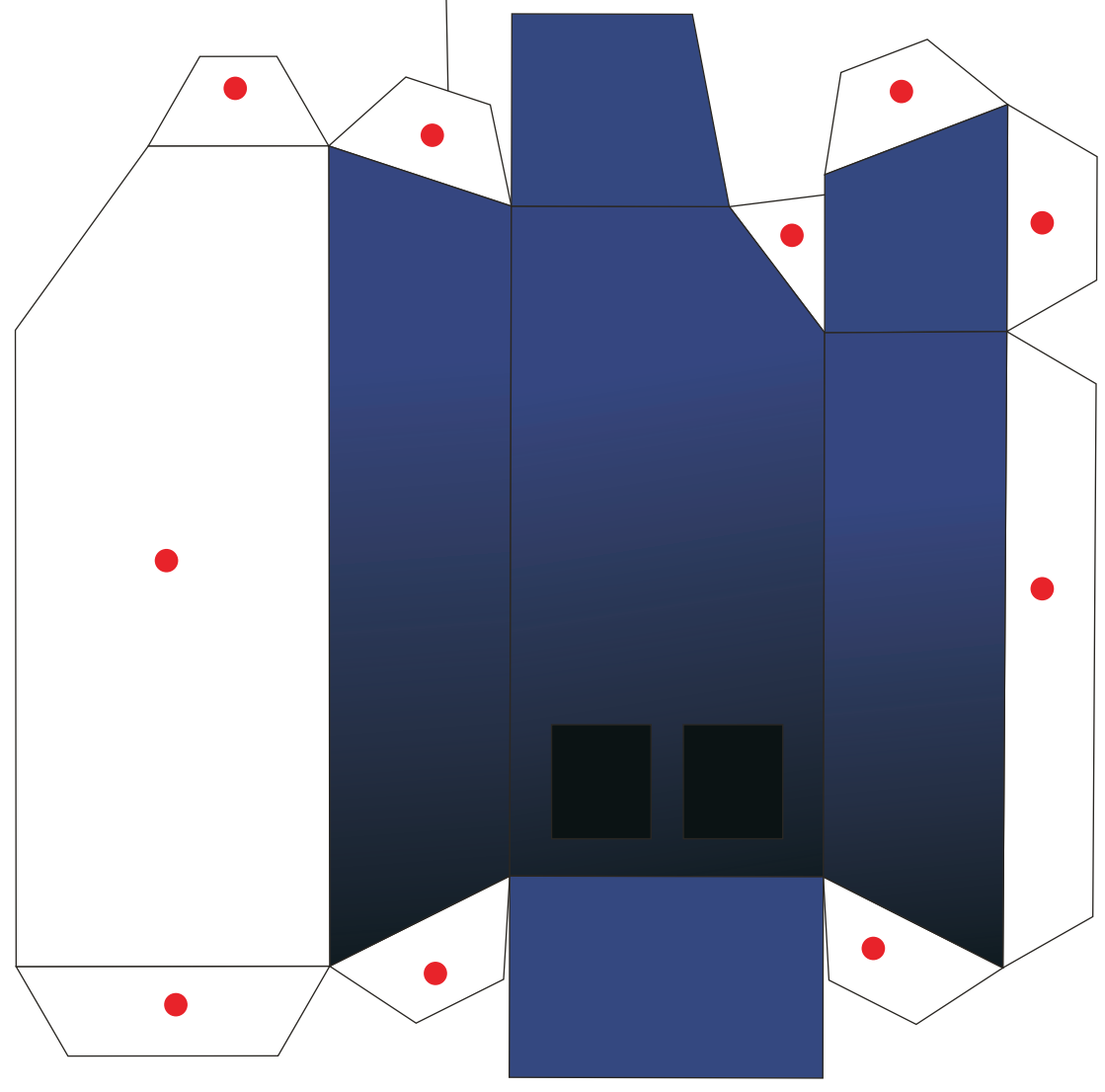
17



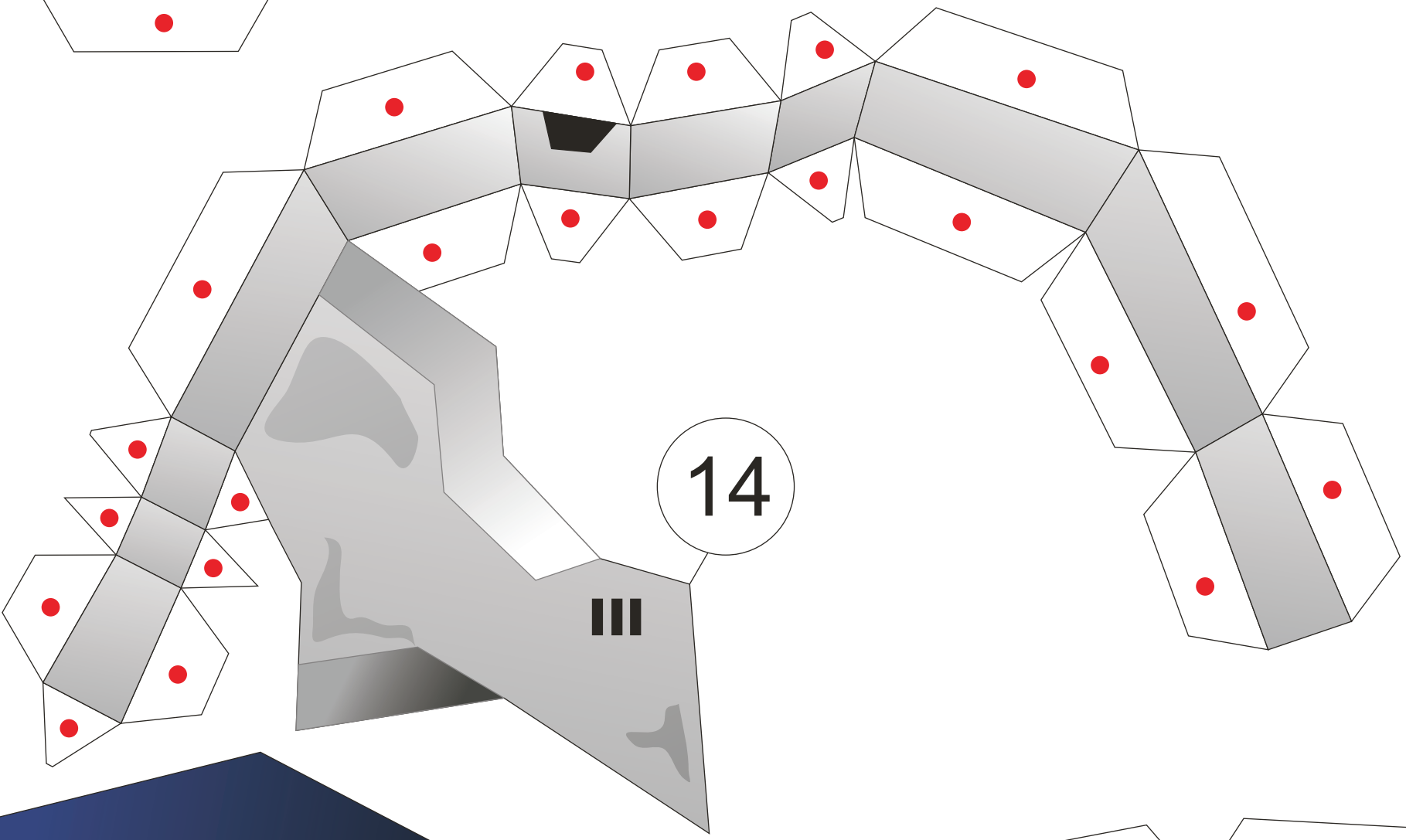
27



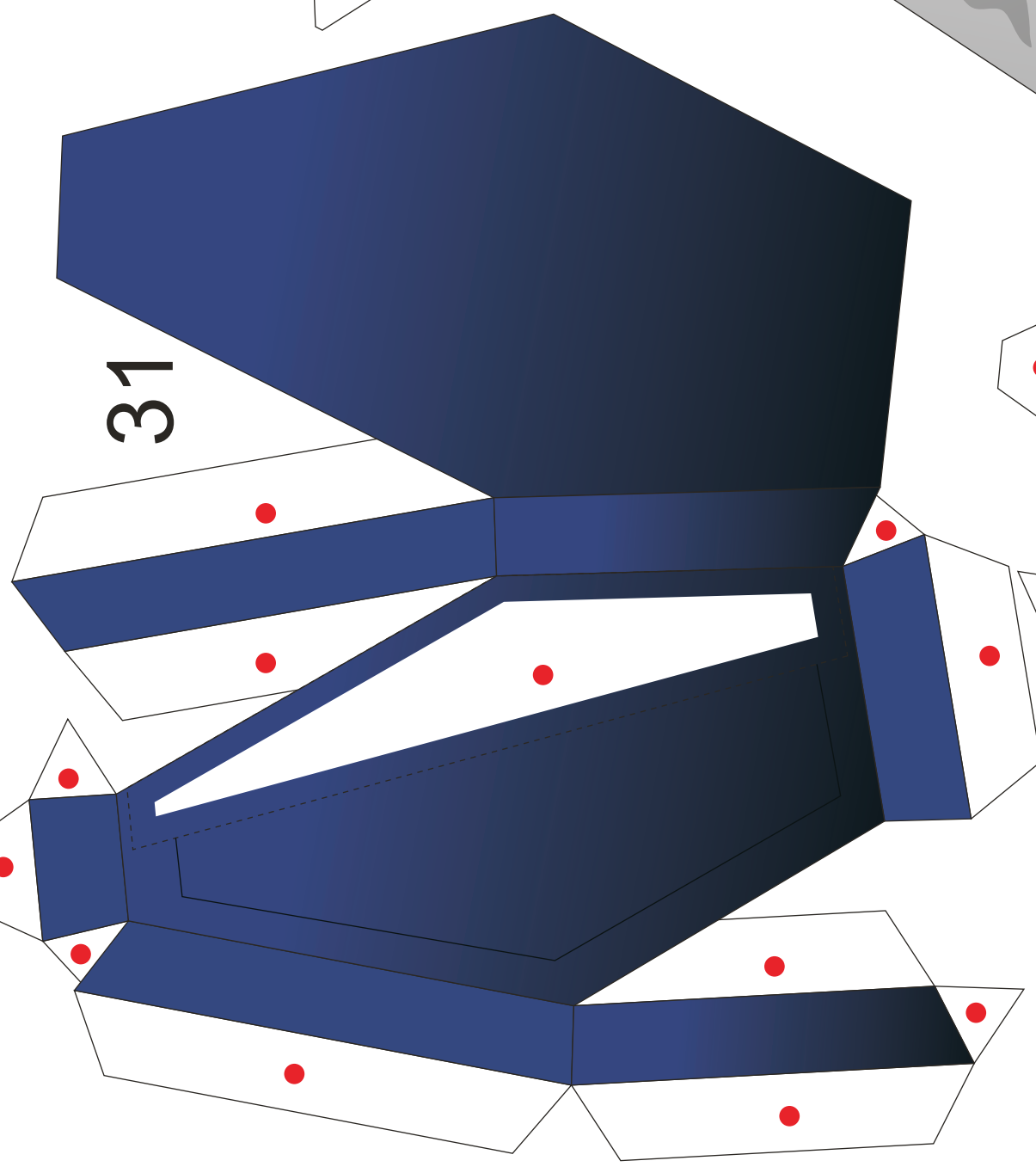
29



14



31



30

