

LEGEND

- Glue
- ✳ Cutout - make a hole



Airliner Series

Airbus A320-200

Air Asia

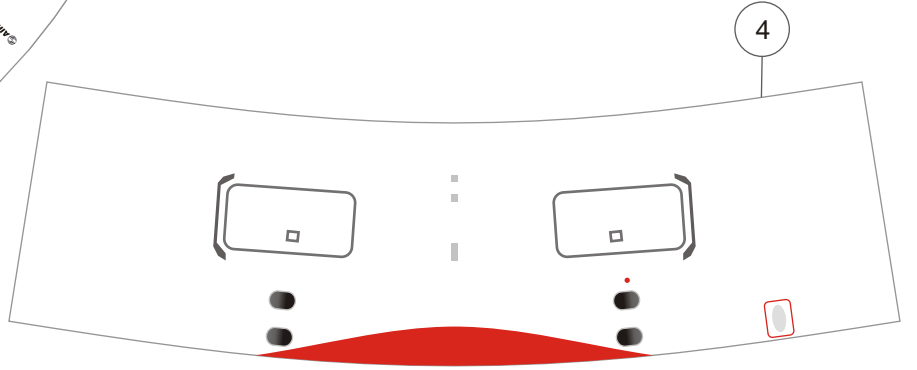
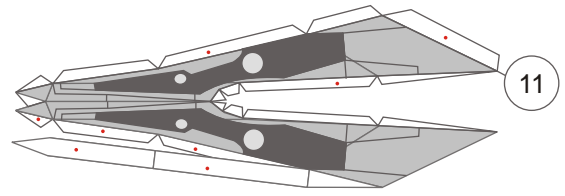
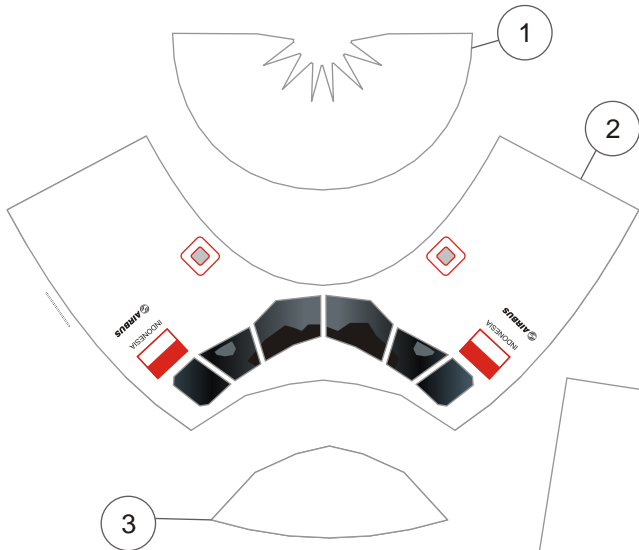
Scale 1 : 100

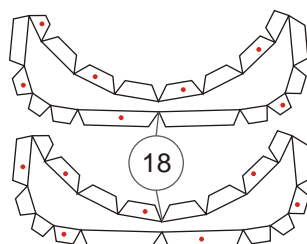
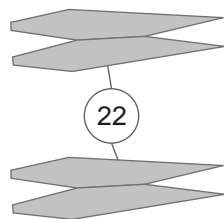
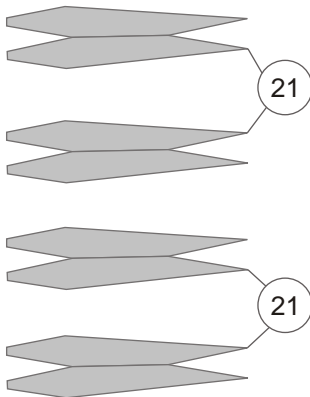
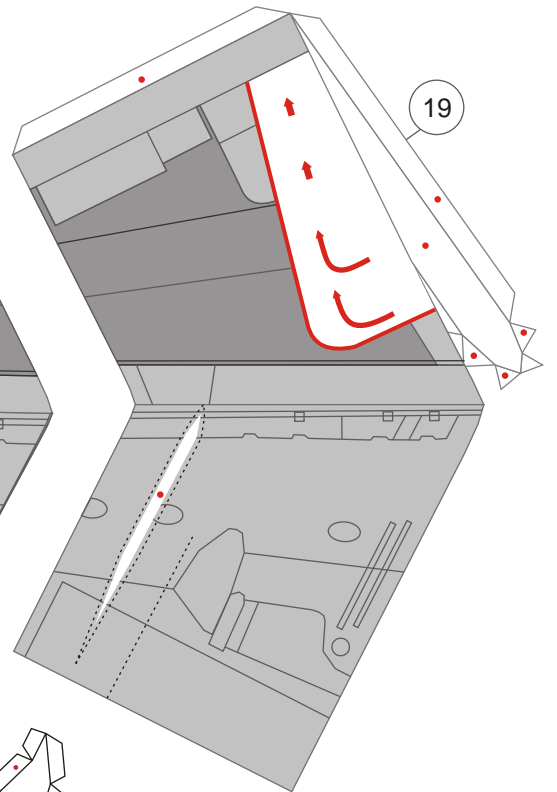
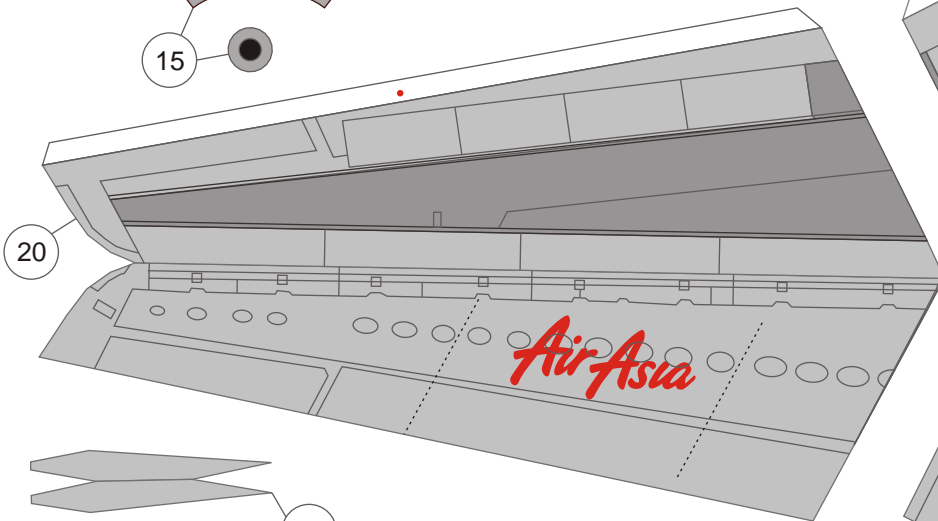
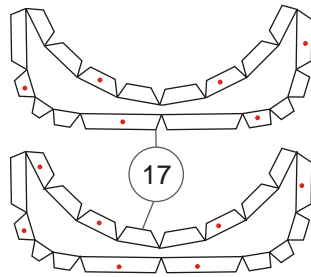
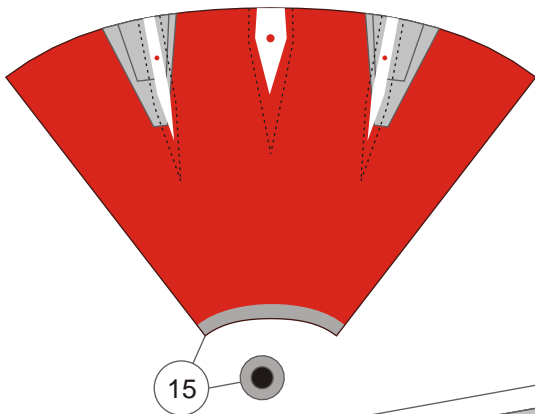
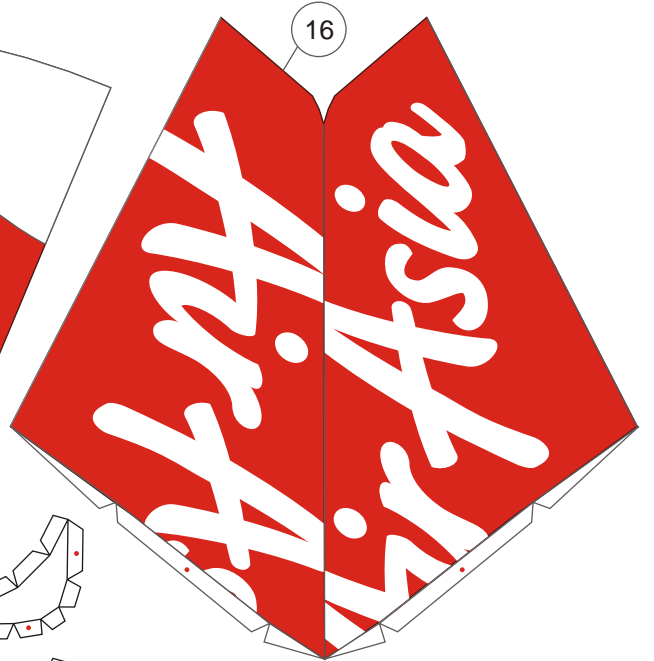
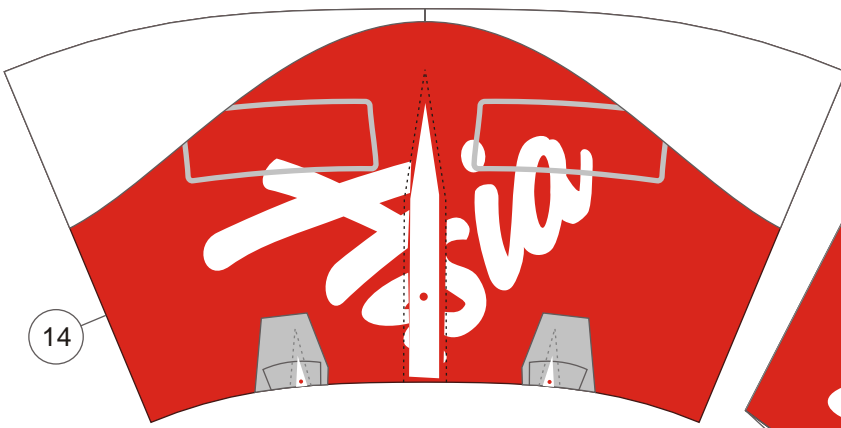
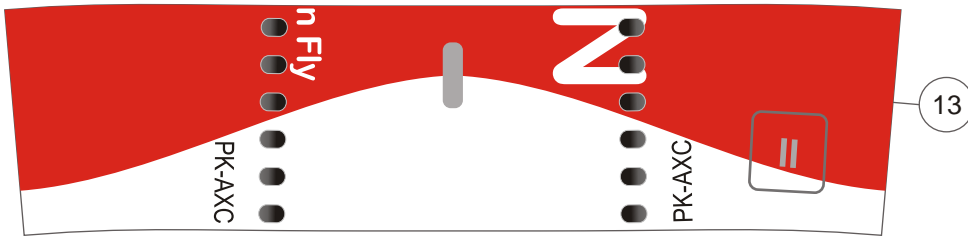
This model is for remembering a tragic aircraft accident that happened on Air Asia flight 8501 on 28 December 2014. It lost contact with the ATC and crashed on Karimata Strait, just above the Java Sea. Until the release of this model, only 48 passengers and crews were found, but the black box which contained FDR was already found. The ping on CVR was already found too. The template originally was recolor and submitted by Miguel Quilab from Philippines, but when I look at it, the livery was different from the livery on flight 8501. So I have to find the real plane photograph and make a necessary changes. The engines also different from my original template, this Air Asia A320-200 PK-AXC use CFM engine, so I have to change the engines template as well.

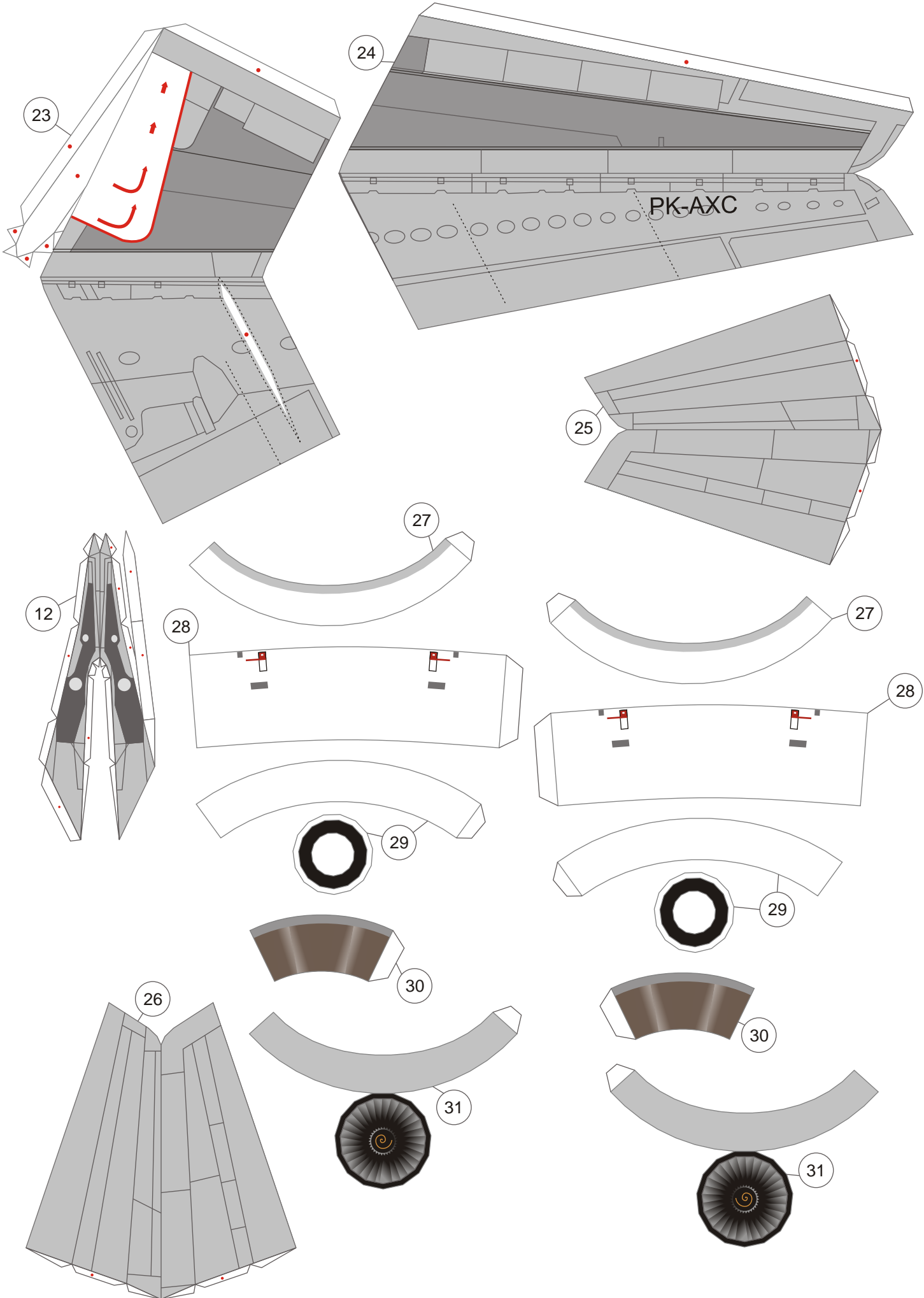
Print page 2-4 on 100-120 gsm paper
Print page 5 on 70-80 gsm paper
Print page 6-7 on 160-200 gsm paper

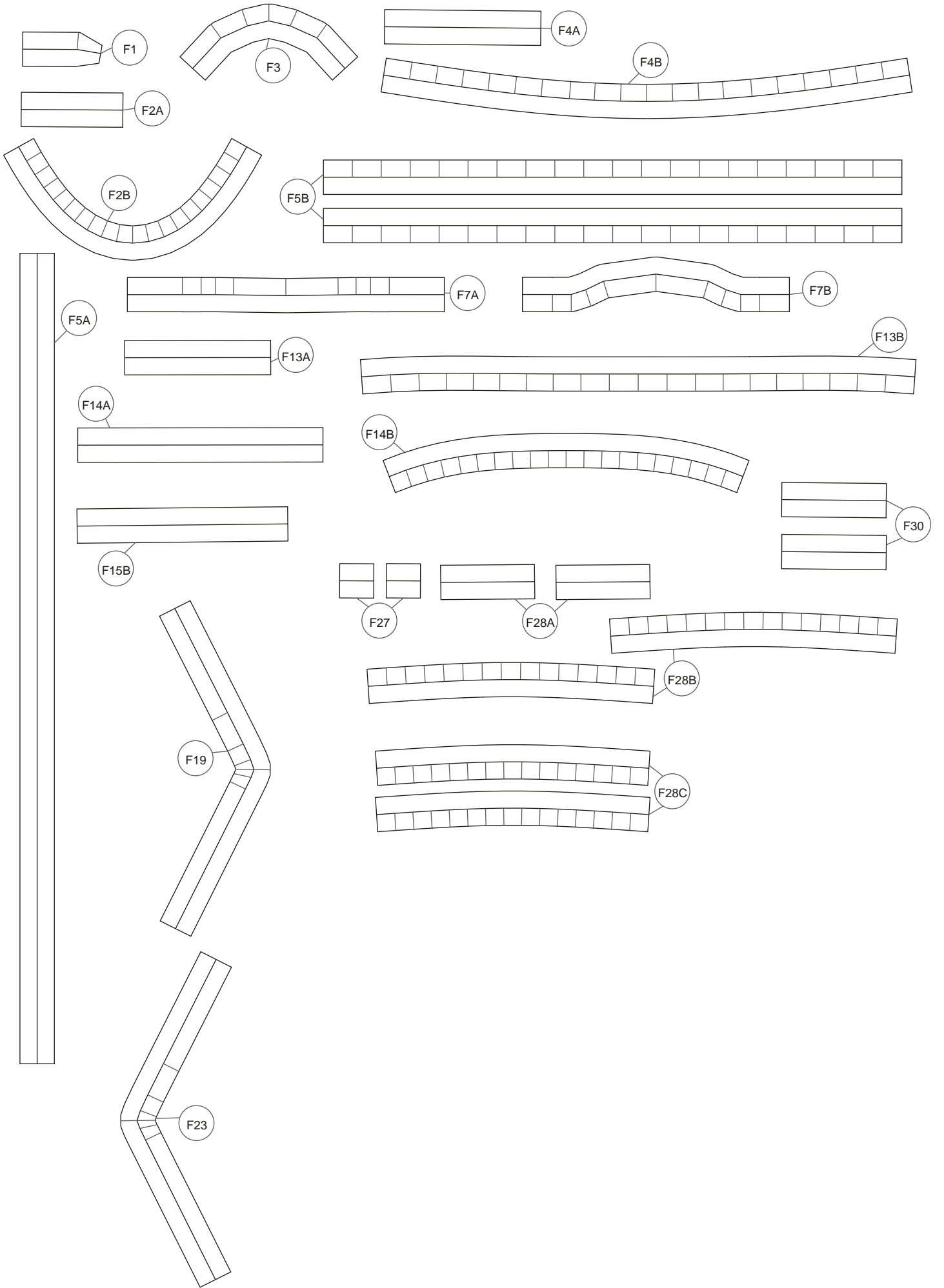
Assembly Instructions - [click here](#)

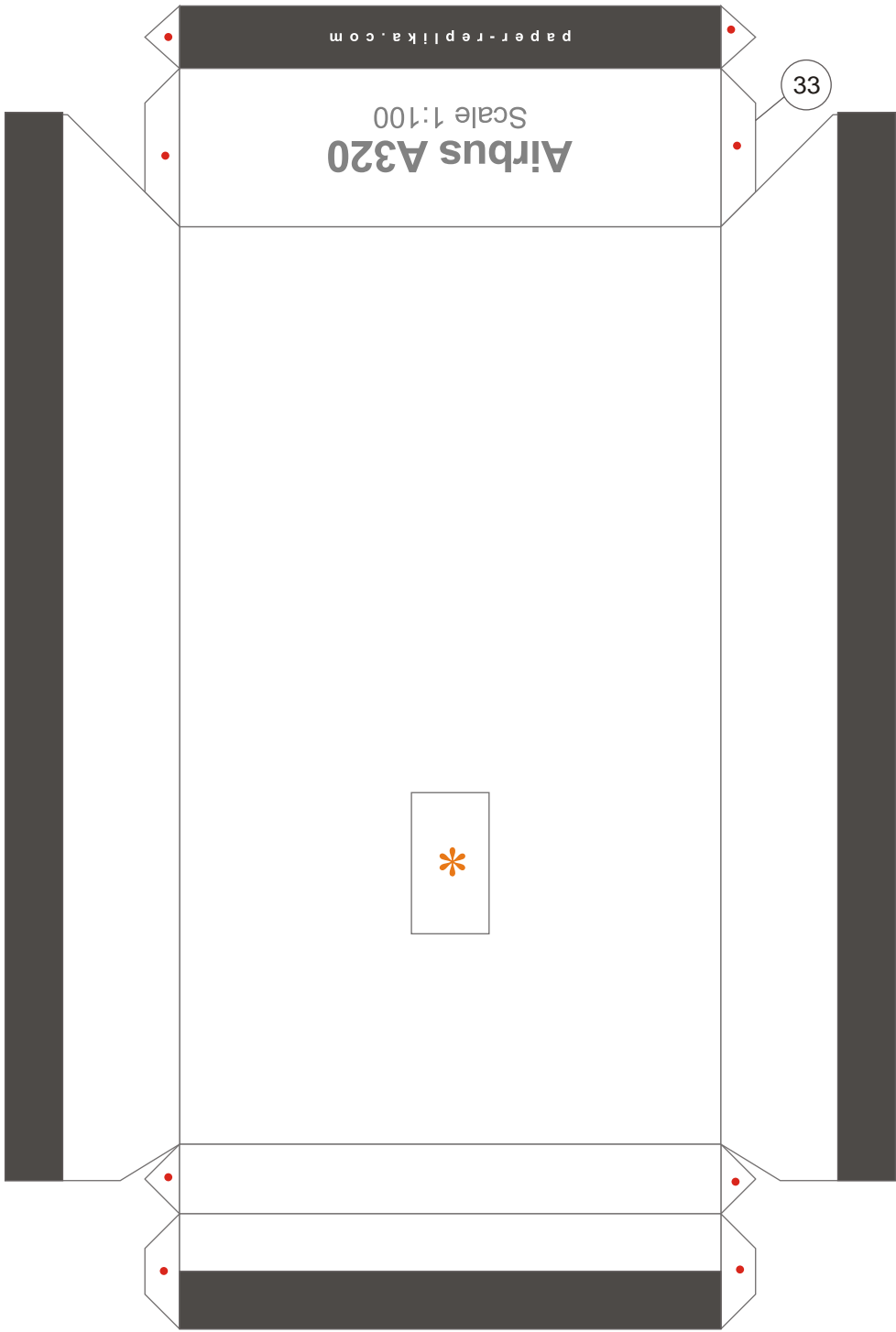
Petunjuk Perakitan











Airbus A320
Scale 1:100

paper-repikka.com

33



